



GOVERNMENT OF MANIPUR

**ESTIMATES OF DISTRICT DOMESTIC PRODUCT
MANIPUR
1999-00 to 2006-07**

NEW SERIES

**DIRECTORATE OF ECONOMICS & STATISTICS
GOVERNMENT OF MANIPUR
IMPHAL**

PREFACE

This issue of the Estimates of the State Domestic Product of Manipur provides new series estimates of Domestic Product with 1999-2000 as base year for the period from 1999-00 to 2006-07. The estimates for the new series are prepared and compiled by incorporating the changes in the data base and methodology under the aegis of the National Accounts Division of Central Statistical Organisation, Government of India.

The Directorate of Economics & Statistics, Manipur is thankful to the Central Statistical Organisation /All Departments /Agencies for providing the requisite data in time so as to enable the Directorate to arrive at the estimates of State Domestic Product of various sectors of the economy and compile this publication and bring it out in the present form. It is hoped that with their continued co-operation the Directorate will be able to reduce the time-lag further to meet the requirements of the users.

The estimates of the State Domestic Product were prepared and compiled by the Regional and State Accounts Unit of the Directorate. I would like to express my deep sense of appreciation of the work done by the officers and staffs of the unit.

Comments and suggestions from the users for improvement in its future issues of the publication are most welcome.

Imphal
The 25th January, 2008

Oinam Biren Singh
Director of Economics & Statistics
Manipur

CONTENTS

PART - I

CHAPTER	PAGES
I Introduction	1
II Analytical note on the State Domestic Product of Manipur .	5

PART – II

GRAPHICAL PRESENTATION	13
------------------------	----

STATISTICAL TABLES

1. State Domestic Product of Manipur At-A-Glance	21
2. Gross State Domestic Product of Manipur by Industry of Origin at current prices, 1999-00 to 2006-07 (A).	22
3. Percentage Distribution of Gross State Domestic Product of Manipur at current prices by major sector	23
4. Percentage Distribution of Gross State Domestic Product of Manipur by Industry of Origin at current prices	24
5. Annual Growth Rate of Gross State Domestic Product of Manipur by Industry of Origin at current prices	25
6. Index Number of Gross State Domestic Product of Manipur by Industry of Origin at current prices	26
7. Gross State Domestic Product of Manipur by Industry of Origin at constant (1999-00) prices, 1999-00 to 2006-07(A).	27
8. Percentage Distribution of Gross State Domestic Product of Manipur at constant (1999-00) prices by major sector	28
9. Percentage Distribution of Gross State Domestic Product of Manipur by Industry of Origin at constant (1999-00) prices, 1999-00 to 2006-07(A).	29
10. Annual Growth Rate of Gross State Domestic Product of Manipur by Industry of Origin at constant (1999-00) prices	30
11. Index Number of Gross State Domestic Product of Manipur by Industry of Origin at constant (1993-94) prices	31
12. Net State Domestic Product of Manipur by Industry of Origin at current prices, 1999-00 to 2006-07(A).	32
13. Percentage Distribution of Net State Domestic Product of Manipur at current prices by major sector	33
14. Percentage Distribution of Net State Domestic Product of Manipur by Industry of Origin at current prices	34

15.	Annual Growth Rate of Net State Domestic Product of Manipur by Industry of Origin at current prices	35
16.	Index Number of Net State Domestic Product of Manipur by Industry of Origin at current prices	36
17.	Net State Domestic Product of Manipur by Industry of Origin at constant (1999-00) prices, 1999-00 to 2006-07(A).	37
18.	Percentage Distribution of Net State Domestic Product of Manipur at constant (1999-00) prices by major sector	38
19.	Percentage Distribution of Net State Domestic Product of Manipur by Industry of Origin at constant (1999-00) prices	39
20.	Annual Growth Rate of Net State Domestic Product of Manipur by Industry of Origin at constant (1999-00) prices	40
21.	Index Number of Net State Domestic Product of Manipur by Industry of Origin at constant (1999-00) prices	41
22.	Per Capita Income of States, UTs and All India at current prices	42
23.	Per Capita Income of States, UTs and All India at constant (1999-00) prices	43

PART -III

SOURCES OF DATA AND METHODOLOGY	47
---------------------------------	----

PART – I

CHAPTER - 1

INTRODUCTION

The most well known and widely used measure for the performance of a state is the estimates of State Domestic Product. It is defined as the money value of all goods and services produced during a specified period within the geographical boundary of a state regardless of the fact whether factors of production are owned by person living inside or outside the state. The estimates of State Domestic Product (SDP) are regarded as an effective instrument to measure the growth and structural changes in the economy of the state. The first publication of the SDP of Manipur was brought out in the month of January 1966 with 1960-61 as the base year. The 1960-61 series is followed by 1970-71, 1980-81 and then 1993-94 series. Now a new series has been introduced with 1999-00 as the base year.

The SDP can be viewed from three inter-related angles viz., in terms of production, income and expenditure. The methodology followed in arriving the estimates of SDP of Manipur is mainly according to the guidelines laid down by the Central Statistical Organisation (CSO), Government of India, depending on the nature and availability of data of the sectors and sub-sectors. The methodology and principles adopted by the CSO is based on the Systems of National Accounts (SNA) suggested by the Statistical Office of the United Nations. In order to estimate the SDP of Manipur, the entire economic activity is broadly classified into three major sectors viz., Primary, Secondary and Tertiary which altogether comprises of thirteen sub-sectors. The estimates of SDP are prepared both at current and constant prices. The estimates at current prices are obtained by evaluating the products at prices prevailing during the year. The estimates so derived, over the years, do not reveal actual economic growth because these includes the combined effect of the changes in the volume of goods and services as well as the changes in the prices of goods and services. In order to project a picture of real economic growth or depict the overall real increase/decrease in the production of the state, the goods and services are evaluated at the prices prevailed in a particular fixed year known as base year. These estimates are known as estimates at constant prices.

The new series of National Accounts Statistics (NAS) with 1999-2000 as the base year was released by the CSO on the 31st of January, 2006. In order to facilitate the preparation of the estimates of SDP by the State Directorate of Economics and Statistics corresponding to the New Series, a workshop on 'New Series on National Accounts Statistics' was organised by the CSO during 3-7 April, 2006 at Hyderabad. The workshop was attended by the representatives of all the State Directorate of Economics and Statistics. Keeping on the line of discussion had in the workshop, the Directorate of Economics and Statistics, Manipur has prepared the New Series at current/constant prices with 1999-00 as the base year.

Conventionally, the base year is shifted decennially to a year in which decennial population census has been conducted as the data on working force have been obtained from the population census. However, it was observed that the National Sample Survey Organisation (NSSO) in its quinquennial survey on Employment and Unemployment have been able to capture the activity of people much better than the population census, particularly those of females. Consequently the Central Statistical Organisation (CSO) decided to adopt for the first time the work force estimates based on the NSS workforce participation rates (WPR) from the 1993-94 (50th round) survey results. This has been one of the main reasons to choose 1993-94 as the base year for the estimation of National Accounts Statistics in the 1993-94 series. Further in revising the base year to 1993-94 the CSO has mainly been guided by three considerations, namely, (i) revision of base year to a more recent year for a more meaningful analysis of the structural changes in the economy, (ii) complete review of the existing database and methodology employed in the estimation of various macro-economic aggregates including choice of the alternative database on individual subjects and (iii) to the extent possible, implementing the recommendations of the 1993 System of National Accounts (1993 SNA) prepared under the auspices of the Inter Secretariat Working Group on National Accounts comprising of the European Communities (EUROSTAT), International Monetary Fund (IMF), Organisation for Economic Co-operation and Development (OECD), United Nation and World Bank.

In continuation with the practice followed in the 1993-94 Series, the CSO released the subsequent series hereafter referred to as the New Series of National Accounts on 31st January, 2006 with 1999-2000 as the base year since the data on WPR which has been obtained from the NSS 55th round (1999-2000) Quinquennial Survey on Employment and Unemployment has been used. The Advisory Committee on National Accounts Statistics appointed a Working Group (WG) on Workforce Estimation to arrive at appropriate workforce estimation for use in the New Series. The WG submitted its Report in March, 2004 which recommended the detailed sources and methodology to be adopted for the new series for arriving at the estimates of working force using the data available from the NSS 55th Round and the population Census, 2001. The WG refers to the Work Force (Number of Workers) in each of the economic activities as Labour Input which is also the job count in these activities.

An important feature of the 1999-2000 New Series, as in the 1993-94 Series, is the allocation of Imputed Banking Charge (IBC) or Financial Intermediation Services Indirectly Measured (FISIM) as intermediate input to user industries viz., agriculture, livestock, Mining and quarrying, manufacturing, electricity and gas, transport, construction, storage, trade, hotels and restaurants, business services and other services. The FISIM is the income of banking and financial enterprises which is equivalent to interest and dividend receipts net of interest paid to the depositors. It is an indirect measure of the value of financial intermediation services provided but for which financial institution do not charge explicitly.

The state-wise estimates of FISIM are estimated by the National Accounts Division(NAD), Central Statistical Organisation (CSO) since the Banking and Insurance sub-sector falls in the supra-regional sectors i.e., those sectors covering multi-unit establishments whose operation extend over a number of States. The total FISIM allocated to Manipur is distributed to different user industries of the state in proportion to the respective sectoral Gross State Domestic Product (GSDP).

The CSO prepares the estimates of the supra-regional sectors viz., Railways, Communication, Banking and Insurance and Public Administration (Central) for the states including Manipur. The estimates for the remaining sectors, as presented in this publication, are prepared by the States Directorate basically on the guidelines of the CSO. However, there are certain areas where departures are to be resorted to due to the nature of the database available hitherto. From the estimates of the GSDP for the different sectors, the estimates of the consumption of fixed capital (CFC) are deducted to arrive at the Net State Domestic Product (NSDP). CFC is a cost of production. It may be defined in general terms as the decline, during the course of the accounting period, in the current value of the stock of fixed assets owned and used by a producer as a result of physical deterioration, normal obsolescence or normal accidental damage. It excludes the value of fixed assets destroyed by acts of war or exceptional events such as major natural disasters. The estimates of CFC are prepared by the CSO on the basis of the gross fixed capital stock for each type of assets available over a sufficiently long period.

In the current series, the estimates are presented both at current and constant (1999-2000) prices using the available data obtained from various sources and also revised data/norms furnished by the CSO. The sources of data and the methodology adopted in the estimation of the State Domestic Product both at current and constant (1999-2000) prices are given in part – III.

CHAPTER – II

ANALYTICAL NOTE ON THE STATE DOMESTIC PRODUCT OF MANIPUR

In the current series, the estimates are presented both at current and constant (1999-2000) prices for the years from 1999-2000 to 2006-2007 using available data obtained from various sources and also revised data/norms supplied by the Central Statistical Organisation (CSO), Government of India. The Quick and Advance estimates for the years 2005-2006 and 2006-2007 have been prepared on the basis of the previous years estimate or past trends.

1. GROSS STATE DOMESTIC PRODUCT (GSDP)

A study of sectoral composition of State Income not only reveals the contribution of each sector in the economy but also the structural shifts taking place over the years. During the period 1999-00 to 2006-07, the 'Tertiary Sector' also known as services sector is the major contributor to the total State Domestic Product (SDP) of Manipur except for the year 2006-2007(A). The Gross State Domestic Product of Manipur has been estimated at Rs.326016 lakhs in 1999-2000 and Rs.643823 lakhs in 2006-2007 registering an average annual growth of 9.72%. During the same period, the GSDP of Manipur at constant (1999-2000) prices shows a growth of 7.50%. The GSDP of Manipur at current and constant prices for the period 1999-2000 to 2006-07 is presented diagrammatically at chart No. 1 to enable to grasp the movement of the economy. The growth in the sectoral share by economic activities reflecting the changes that have taken place over the years in the economy is discussed briefly in the following paragraphs.

1.1 PRIMARY SECTOR

During 1999-2000 to 2006-2007, the GSDP at current prices from the Primary Sector recorded an annual average growth of 7.13%, while at constant prices, it was 4.78%.

1.1.1 Agriculture including Livestock:

Agriculture including Livestock Sector accounts for 85.82% of the GSDP in the primary sector and 23.09% in the total GSDP in 1999-2000. The trend in the following years indicates the predominance of the sector not only in respect of the primary sector but also in the state economy as a whole. The sector recorded a growth of just 3.24% in 2000-01 over 1999-2000. The performance of the sector in the following years shows some improvement. The annual growth of 17.70% in 2003-04 over the previous year is mainly due to increase in production of paddy by 13.58% and increase in the value of fruits & vegetables by 36.15%. The annual growth of the sector is projected at 5.24 % and 3.80 % in 2006-07 over 2005-06 at current and constant prices respectively.

1.1.2 Forestry & Logging sector:

The sub-sector showed negative annual growth rate during 2000-01, 2001-02 and 2004-05 over the respective previous years. The increase in growth of 8.80% in 2003-04 is due to 338.68% increase in production of Industrial wood whereas the decrease of 0.84% in 2004-05 is due to 48.33% decrease in value of Minor forest product. The GSDP for 2005-06 and 2006-07 are estimated at Rs.6856 and Rs.7975 lakhs respectively. The fluctuations observed in the annual growth rate during 1999-00 to 2006-07 are largely due to the variations in the outturns of major forest products and value of minor forest products.

The GSDP at constant prices from Forestry & Logging Sector shows negative growth rate during 2002-03 and 2004-05 over the respective previous years. In case of the other years, similar trend can be observed as at current prices.

1.1.3 Fishing:

The GSDP from the fishing sector at current prices was Rs.6925 lakhs in 1999-00 which rose to Rs.12087 lakhs in 2006-07 registering an average annual growth of 7.96%. During the period the sub-sector shows an increase of 26.63% and 10.76% in 2000-01 and 2004-05 over the previous years which are due to increase in the price of Inland fish by 33.98% and 12.55% respectively.

At constant prices, the GSDP from the Fishing sub-sector is estimated at Rs.6925 lakhs during 1999-00 and is further projected to increase to Rs.7725 lakhs in 2006-07.

1.1.4 Mining & Quarrying:

The contribution of the Mining & Quarrying sector at the Primary Sector is estimated as zero in both current and constant prices.

1.2 SECONDARY SECTOR

Among the three major sectors, the contribution of the Secondary Sector is the least up to 2003-04 and highest in 2006-07. It contributed 22.29% to the total GSDP in 1999-00 which increases to 25.78% in 2003-04 thereafter followed by a share of 35.08%, 37.86% and 40.30% in 2004-05, 2005-06 and 2006-07 respectively. The sector registered an annual growth rate of 18.18% at current prices while it grows at 16.49% at constant prices during 1999-00 to 2006-07.

1.2.1 Manufacturing:

Though the manufacturing sector contributes a share of about 27.39% in the total GSDP of the secondary sector in 1999-00 at current prices, the subsequent years recorded a positive growth rate except in 2001-02. During the period 1999-00 to 2006-07, the annual average growth worked out to be 7.17% and 4.03% at current and constant prices respectively with the highest annual growth recorded in the year 2004-05 and negative annual growth is recorded in the year 2001-02.

1.2.2 Construction:

The major shares of GSDP in the Secondary Sector accrue from the construction sector during 1999-00 to 2006-07. In 1999-00, the GSDP from the sub-sector is estimated at Rs. 39241 lakhs constituting a share of 54.00% in the Secondary Sector and 12.04% in the total GSDP. An abnormally high growth of 115.25% is observed in 2004-05 over 2003-04 which is due to high growth in residual sub-sector.

1.2.3 Electricity, Gas & Water supply:

During the period 1999-00 to 2006-07, the GSDP from Electricity, Gas & Water Supply shows positive annual growth rate except a negative growth of - 4.07% in 2002-03 over 2001-02 which is due to negative growth in the Gross Value Added of Non-Departmental Commercial undertakings. The State Domestic Product from the sub-sector was estimated at Rs.18138 lakhs in 2003-04 and Rs.21292 lakhs in 2004-05 and further projected at Rs.26671 lakhs in 2005-06 and Rs.28460 lakhs in 2006-07.

At constant prices, the sub-sector depicts negative growth rate for all the years except 2003-04, 2005-06 and 2006-07.

1.3 TERTIARY SECTOR

In spite of the fact that the share of the Tertiary Sector in the total GSDP is the highest except for the year 2006-07, the contribution of the sub-sectors within the major sector as a whole are not markedly significant. The major share in respect of the Tertiary Sector originates from three sub-sectors viz. (i) Trade, Hotels & Restaurants, (ii) Public Administration and (iii) Other Services. The sector registered a positive annual growth except 2000-01 and 2002-03 over the previous year.

1.3.1 Transport, Storage & Communication:

The major shares of GSDP within this sub-sector accrue from Transport by other means and communications while the contribution from Railways and Storage are relatively insignificant. During 1999-00 to 2006-07, the sub-sector recorded an average annual growth of 7.27% at current prices and 3.07% at constant prices.

1.3.2 Trade, Hotels & Restaurants:

The GSDP from Trade, Hotels & Restaurants at current prices was estimated at Rs.42158 lakhs in 2006-07 as against Rs.26441 lakhs in 1999-00 showing an annual average growth rate of 6.66%. The period witness highest annual growth rate of 15.73% in 2003-04 over 2002-03 which is followed by 13.78% in 2004-05 over 2003-04.

At constant prices, the sub-sector recorded an average annual growth of 4.79% during 1999-00 and 2006-07.

1.3.3 Banking and Insurance:

Among the six(6) sub-sectors of the Tertiary Sector, the least contributor is the Banking and Insurance sub-sector. The highest annual growth rate of 33.34% in 2002-03 over 2001-2002 at current prices and 28.17% at constant prices in 2002-03 over 2001-02 was observed during 1999-00 to 2006-07. Positive growth is observed for all the years at current prices.

1.3.4 Real Estate, Ownership of Dwelling, Business Services and Legal Services:

In 1999-00, this sub-sector contributed 6.22% to the Tertiary Sector and 3.16% to the total GSDP. In terms of annual growth rate, the highest is recorded at 17.33% in 2003-04 over 2002-03 at current prices. The GSDP for the sub-sector at constant prices increased from Rs.10291 lakhs in 1999-00 to Rs.12750 lakhs in 2005-06 and further to Rs.13231 lakhs in 2006-07.

1.3.5 Public Administration:

During 1999-00 to 2006-07, the major share of GSDP in the Tertiary Sector originates from the Public Administration. The GSDP from the sector at current prices was Rs.64095 lakhs in 1999-00 which rose to Rs.84377 lakhs in 2006-07. A significant observation is the maximum annual growth rate of 17.65% at current prices and 16.07% at constant prices during 2001-02 over 2000-01.

1.3.6 Other Services:

At current prices, the highest annual growth is recorded at 9.95% in 2005-06 over 2004-05. Positive annual growth are observed for the years 2001-02, 2004-05, 2005-06 and 2006-07 and remaining years shows negative annual growth.

During 1999-00 to 2006-07, the GSDP at constant prices recorded a similar trend as in current prices.

2. NET STATE DOMESTIC PRODUCT (NSDP)

The NSDP of Manipur at current prices increases from Rs.295411 lakhs in 1999-00 to Rs.454062 lakhs in 2004-05 and further estimated at Rs.577929 lakhs in 2006-07. The sectoral contribution of the major sector to the total NSDP at current prices for 1999-00, 2004-05 and 2006-07 is presented at chart No. 3 so as to enable to visualise the composition of the economy. The period recorded an annual average growth of 9.59% at current prices and 7.64% at constant prices. Chart No. 2 depicts the NSDP of Manipur at current and constant prices during 1999-00 to 2006-07.

2.1 PRIMARY SECTOR

The Primary Sector is the second largest contributor to the total NSDP for the years 1999-00 to 2003-04 and third for the remaining years. Its share in the total NSDP is the highest in 2002-03 with 31.22%.

2.1.1 Agriculture including Livestock:

The percentage share of this sub-sector in the Primary Sector is the highest. The sub-sector registered an annual average growth of 7.05% at current prices and 5.14% at constant prices during 1999-00 to 2006-07. During the period, the highest annual growth is recorded in the year 2003-04.

2.1.2 Forestry & Logging:

The NSDP at current prices from Forestry and Logging sector is estimated at Rs.7436 lakhs during 2006-07 as against Rs.5312 lakhs in 1999-00. The annual growth rate over the years during the period shows the highest in the year 2005-06 over 2004-05 at current prices and in the year 2003-04 over 2002-03 at constant prices.

2.1.3 Fishing:

During 1999-00 to 2006-07, the NSDP from the Fishing Sector registered an annual average growth of 7.40% and 0.36% at current and constant prices respectively.

2.1.4 Mining & Quarrying:

The contribution of the Mining & Quarrying sector at the Primary Sector is estimated as zero in both current and constant prices.

2.2 SECONDARY SECTOR

At current prices, the NSDP of the Secondary Sector is estimated at Rs.63200 lakhs in 1999-00 which is further estimated at Rs.232119 lakhs in 2006-07 which reveals an annual average growth of 18.58%. On the other hand, the period recorded an average annual growth of 17.31% at constant prices.

2.2.1 Manufacturing:

The NSDP from Manufacturing Sector in 2006-07 is projected at Rs.26510 lakhs at current prices and Rs.22134 lakhs at constant prices as against Rs.17484 lakhs in 1999-00. During the period, the sub sector registered an annual average growth of 5.95% and 3.37% at current and constant prices respectively.

2.2.2 Construction:

During 1999-00, the Construction Sector contributes the largest share in the Secondary Sector. During this period, the sector grew at an average rate of 23.06% at current prices and 22.60% at constant prices annually.

2.2.3 Electricity, Gas and Water Supply:

In the year 1999-00, the percentage share of this sector was 11.94% in the Secondary Sector and 2.55% in the total NSDP. The performance of the sector in the subsequent years shows positive growth in the following years except during 2001-02 over 2000-01. The highest annual growth is recorded at 25.26% in 2005-06 over 2004-05.

At constant prices, the NSDP from the sector is estimated at Rs.4477 lakhs in 2006-07 as against Rs.7546 lakhs in 1999-00.

TERTIARY SECTOR

The major portion of the NSDP both at current and constant prices originates from the Tertiary Sector except in 2005-06 and 2006-07. Against the share of 50.52% to the total NSDP in 1999-00, it is estimated at 36.49% at current prices and at 34.93% at constant prices in 2006-07.

2.3.1 Transport, Storage and Communication:

Against a share of Rs.8391 lakhs in 1999-00, the NSDP from Transport, Storage and Communication is projected at Rs.13325 lakhs at current prices and Rs.9830 lakhs at constant prices in 2006-07 registering an annual average growth of 6.61% and 2.26% respectively.

2.3.2 Trade, Hotels & Restaurants:

At current prices, the NSDP from Trade, Hotels & Restaurants Sector is estimated at Rs.41177 lakhs in 2006-07 against Rs.25982 lakhs in 1999-00 registering an annual average growth of 6.58%. At constant prices, the period witnessed a growth of 4.74%.

2.3.3 Banking & Insurance:

The contribution of this sub-sector to the Tertiary Sector is the least. Positive annual growth is observed in the years from 1999-00 to 2006-07 with the highest at 33.73% in 2002-03 over 2001-02 at current prices. On the other hand, the sector registered negative growth in 2001-02 & 2003-04 over the previous year at constant prices while the other years shows positive annual growth with 27.78% in 2002-03 over the previous year being the highest.

2.3.4 Real Estate, Ownership of Dwelling, Business Services and Legal Services:

As against Rs.8048 lakhs in 1999-00, the NSDP from this sector is estimated at Rs.17102 lakhs at current prices and Rs. 8939 lakhs at constant prices in 2006-07 registering an annual growth of 10.77% and 1.50% respectively.

2.3.5 Public Administration:

The NSDP at current prices has increased from Rs.53452 lakhs in 1999-00 to Rs.69545 lakhs in 2006-07, depicting an annual average growth of 3.76%. The maximum level annual increase of 16.69% was obtained in 2001-02.

At constant prices, the sub-sector contributed Rs.60727 lakhs in 2006-07 as against Rs.53452 lakhs in 1999-00 showing an annual average growth of 1.82%.

2.3.6 Other Services:

At current prices, the NSDP from the Other Services sub-sector increased from Rs.48914 lakhs in 1999-00 to Rs.53248 lakhs in 2005-06 and further to Rs.58187 lakhs in 2006-07. During the last seven years, the percentage variation over previous years is highest at 9.95% in 2005-06.

The share of the sub-sector, Other Services which is estimated at Rs.48914 lakhs in 1999-00 rose to Rs.48425 lakhs in 2005-06 and is further projected at Rs.51737 lakhs in 2006-07 at constant prices. The annual average growth recorded during 1999-00 to 2006-07 is 0.80%.

3. PER CAPITA INCOME (Net)

The per capita income of Manipur at current and constant (1999-00) prices is shown at chart No. 4. At current prices, the per capita income of Manipur in 1999-00 was Rs.13260 which has increased to Rs.20326 in 2005-06 and further expected to rise to Rs.22495 in 2006-07. The per capita income at constant prices has been projected at Rs.19625 in 2006-07 as against Rs.13260 in 1999-00. The growth of the per capita income of Manipur and All India at current prices during 1999-00 to 2006-07 is presented at chart No.5

Table No.22 & 23 gives a view of the trend of per capita income of States, Union Territories and All India at current and constant prices respectively.

PART – II

CHART NO. 1: GROSS STATE DOMESTIC PRODUCT OF MANIPUR AT CURRENT AND CONSTANT (1999-2000) PRICES

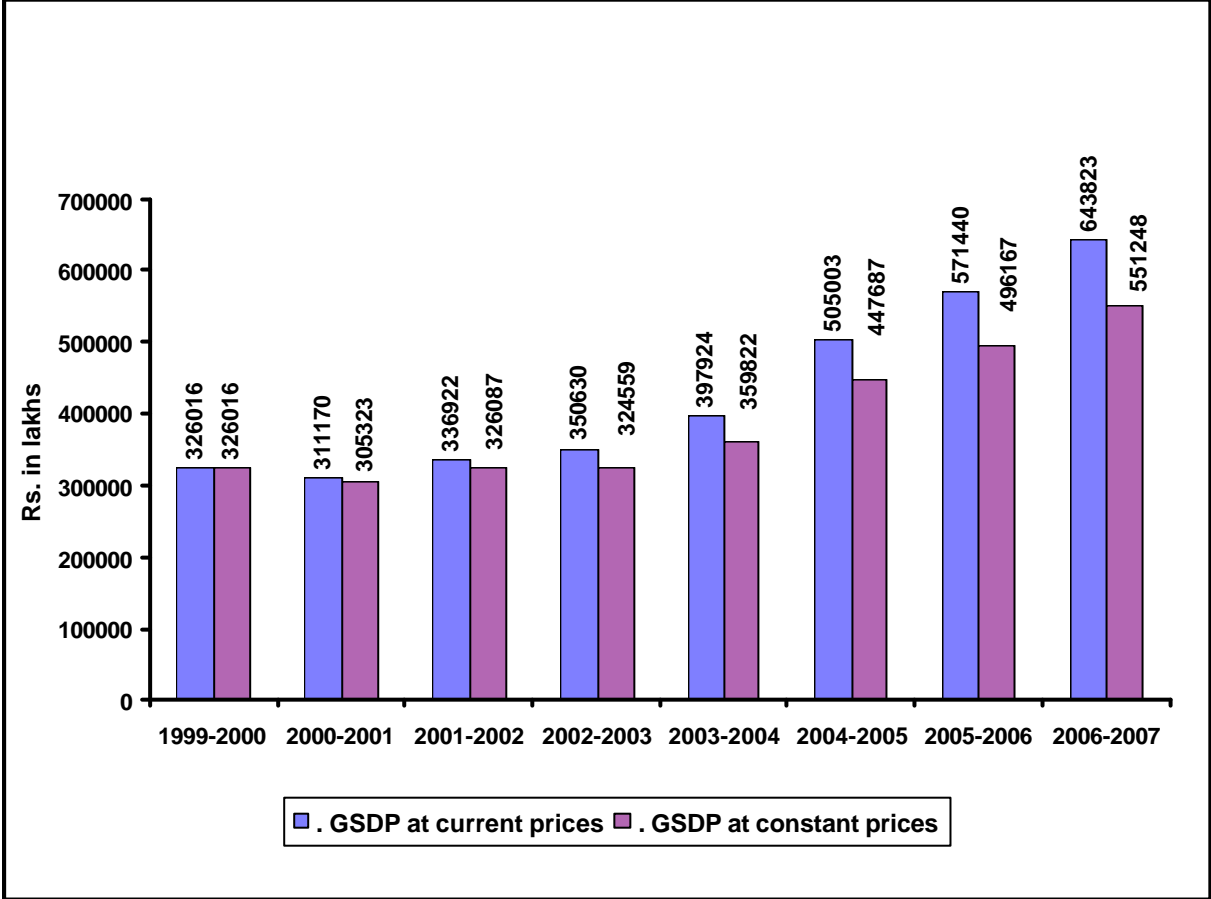


CHART NO. 2: NET STATE DOMESTIC PRODUCT OF MANIPUR AT CURRENT AND CONSTANT (1999-2000) PRICES

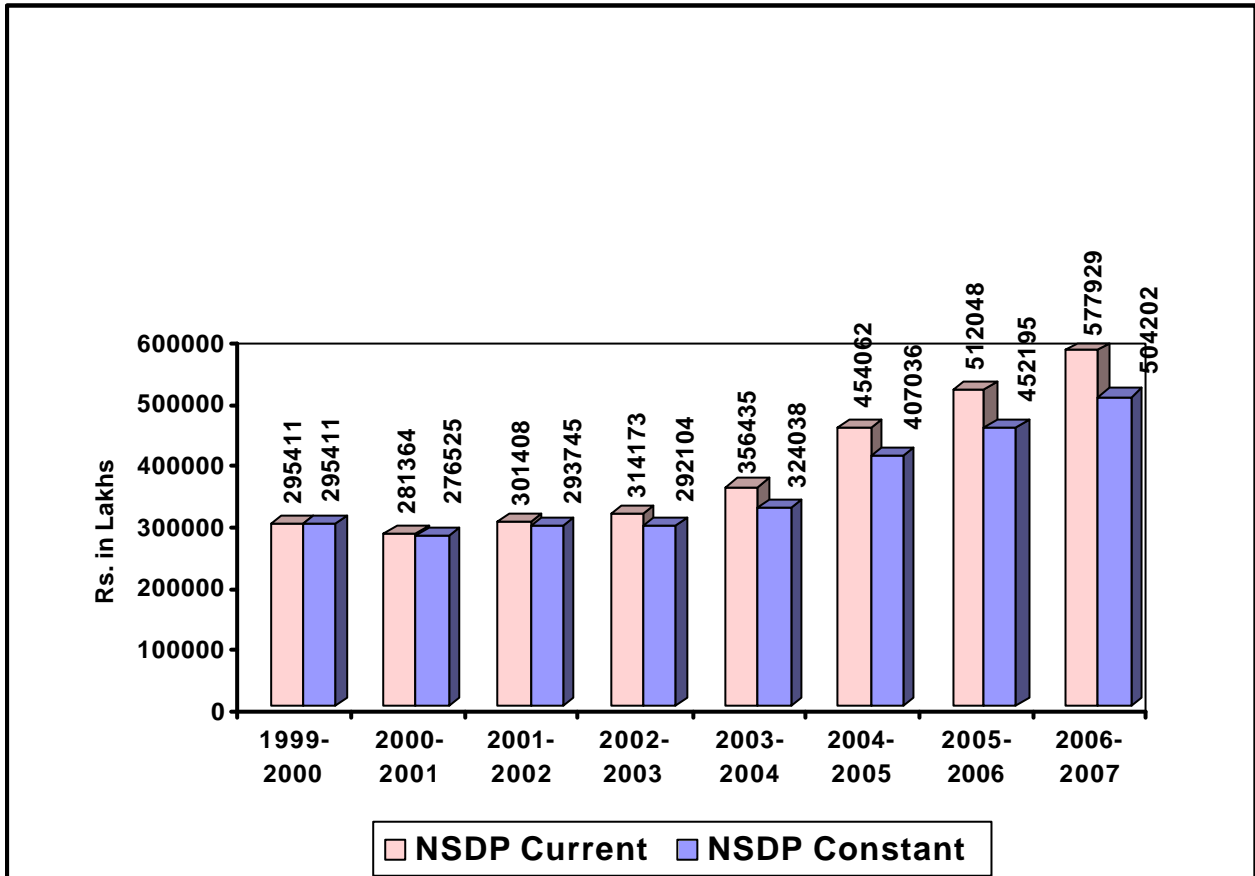


CHART NO.3: SECTORAL CONTRIBUTION OF NSDP OF MANIPUR

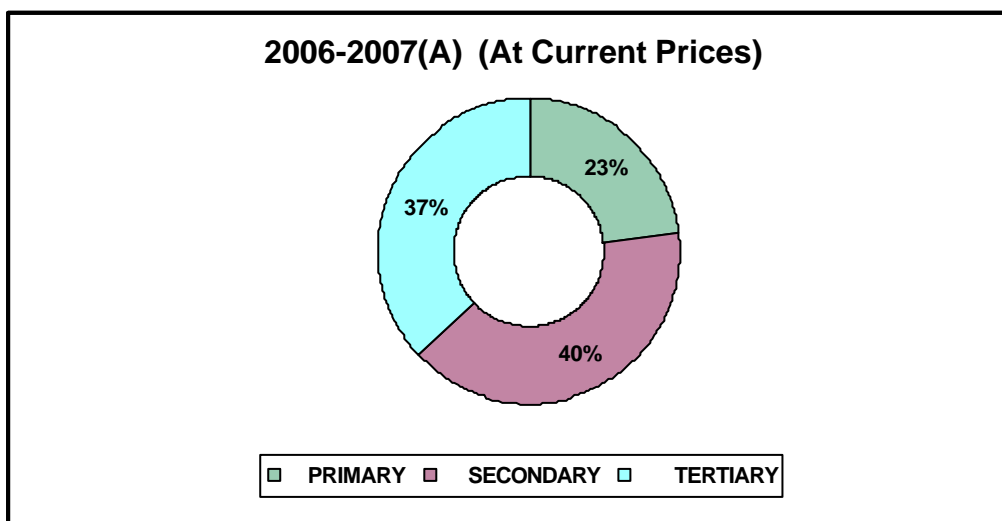
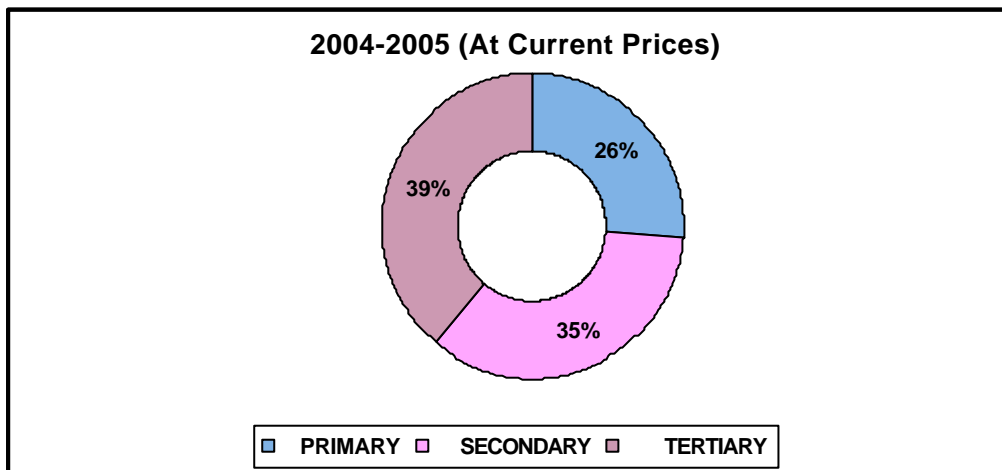
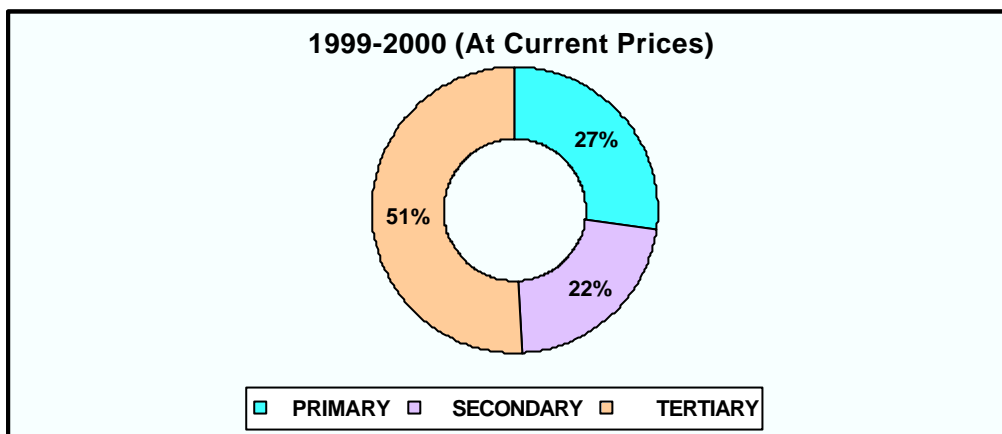
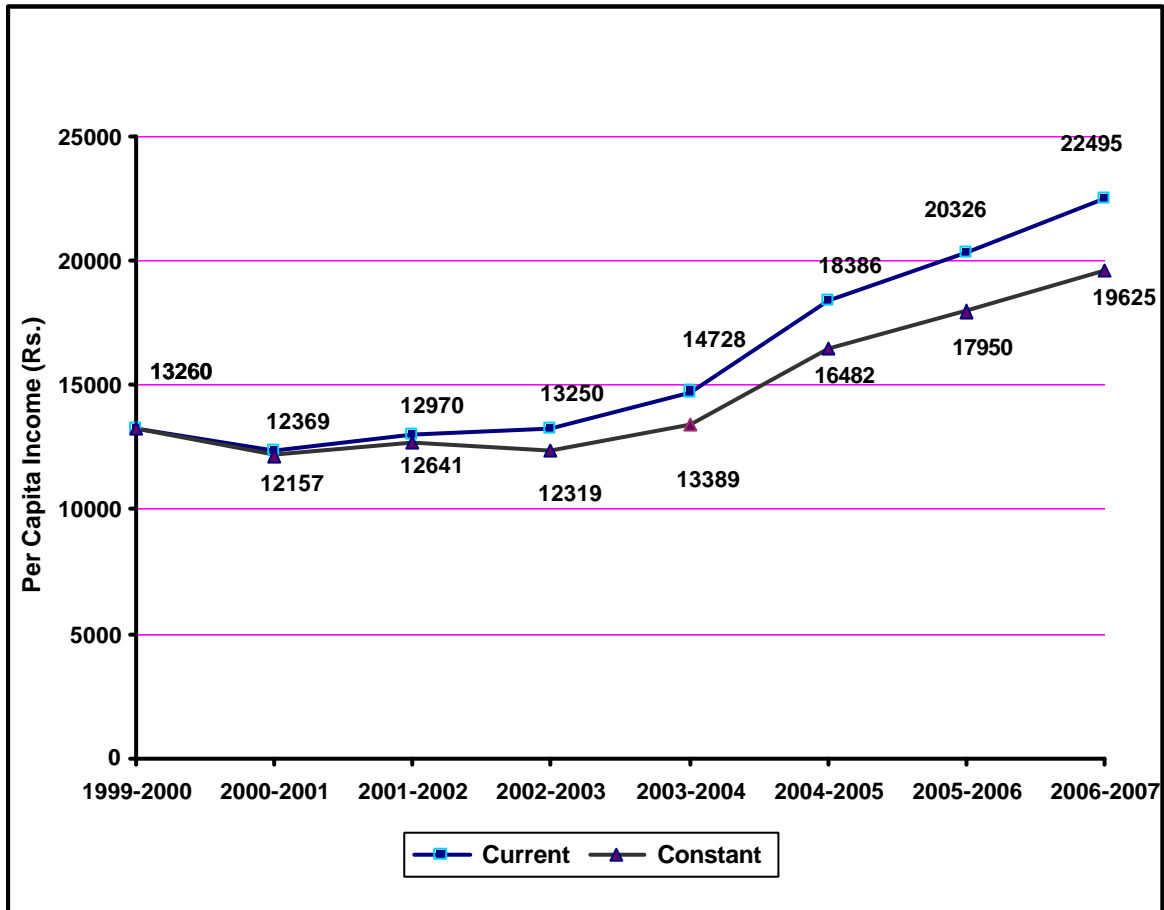


CHART NO.4: NET PER CAPITA INCOME OF MANIPUR AT CURRENT AND CONSTANT(1999-2000) PRICES



**CHART NO. 5 : PER CAPITA INCOME (CURRENT PRICES)
MANIPUR VIS-A-VIS ALL INDIA**

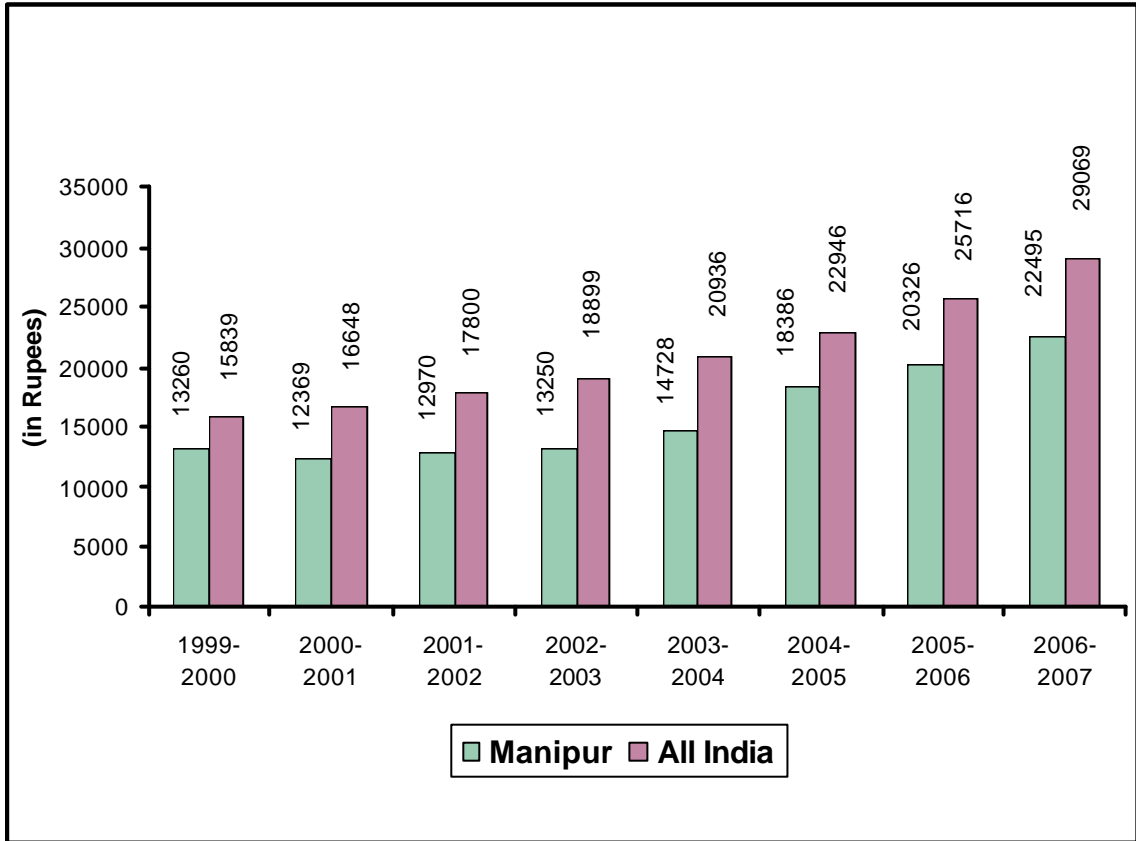


Table No. 1 State Domestic Product of Manipur At- A -Glance

Industry of Origin	1999-00	2000-01	2001-02	2002-03	2003-04	2004-05	2005-06 (Q)	2006-07 (A)
1	2	3	4	5	6	7	8	9
1. GROSS STATE DOMESTIC PRODUCT (GSDP)								
1.1 At Current Prices (Rs. in Lakhs)	326016	311170	336922	350630	397924	505003	571440	643823
1.2 At Constant (1999-2000) Prices (Rs. in Lakhs)	326016	305323	326087	324559	359822	447687	496167	551248
2. INDEX NO OF GSDP								
2.1 At Current Prices	100.00	95.45	103.35	107.55	122.06	154.90	175.28	197.48
2.2 At Constant (1999-2000) Prices	100.00	93.65	100.02	99.55	110.37	137.32	152.19	169.09
3. PER CAPITA GSDP (Rs.)								
3.1 At Current Prices	14633	13680	14499	14787	16442	20449	22683	25059
3.2 At Constant (1999-2000) Prices	14633	13423	14032	13688	14867	18128	19695	21456
4. INDEX NO OF PER CAPITA GSDP								
4.1 At Current Prices	100.00	93.49	99.08	101.05	112.36	139.75	155.01	171.25
4.2 At Constant (1999-2000) Prices	100.00	91.73	95.89	93.54	101.60	123.88	134.59	146.63
5. NET STATE DOMESTIC PRODUCT (NSDP)								
5.1 At Current Prices (Rs. in Lakhs)	295411	281364	301408	314173	356435	454062	512048	577929
5.2 At Constant (1999-2000) Prices (Rs. in Lakhs)	295411	276525	293745	292104	324038	407036	452195	504202
6. INDEX NO OF NSDP								
6.1 At Current Prices	100.00	95.24	102.03	106.35	120.66	153.71	173.33	195.64
6.2 At Constant (1999-2000) Prices	100.00	93.61	99.44	98.88	109.69	137.79	153.07	170.68
7. PER CAPITA NSDP (Rs.)								
7.1 At Current Prices	13260	12369	12970	13250	14728	18386	20326	22495
7.2 At Constant (1999-2000) Prices	13260	12157	12641	12319	13389	16482	17950	19625
8. INDEX NO OF PER CAPITA NSDP								
8.1 At Current Prices	100.00	93.28	97.81	99.92	111.07	138.66	153.29	169.65
8.2 At Constant (1999-2000) Prices	100.00	91.68	95.33	92.90	100.97	124.30	135.37	148.00

Q : Quick Estimates

A : Advance Estimates

**Table No. 2 GROSS STATE DOMESTIC PRODUCT OF MANIPUR BY INDUSTRY OF ORIGIN
AT CURRENT PRICES, 1999-2000 to 2006-07(A)**

(Rs. in lakhs)								
Industry of Origin	1999-00	2000-01	2001-02	2002-03	2003-04	2004-05	2005-06 (Q)	2006-07 (A)
1	2	3	4	5	6	7	8	9
1. Agriculture including livestock	75288	77728	82063	86128	101374	114141	118299	124494
2. Forestry and logging	5513	5479	5356	5463	5944	5894	6856	7975
3. Fishing	6925	8769	9487	9932	10516	11647	11865	12087
4. Mining and Quarrying	0	0	0	0	0	0	0	0
Sub-Total: PRIMARY (1-4)	87726	91976	96906	101523	117834	131682	137020	144556
5. Manufacturing	19907	21619	21018	22577	24972	27854	30801	32876
5.1 Registered	171	238	336	498	392	686	773	826
5.2 Unregistered	19736	21381	20682	22079	24580	27168	30028	32050
6. Construction	39241	31291	36937	45420	59472	128016	158844	198084
7. Electricity, gas & water supply	13522	14387	15212	14593	18138	21292	26671	28460
Sub Total: SECONDARY (5-7)	72670	67297	73167	82590	102582	177162	216316	259420
8. Transport, Storage & Communication	10154	10324	10948	12558	12536	13701	15217	16893
8.1 Railway	5	4	4	5	6	7	7	7
8.2 Transport by other means	5430	5881	6039	6310	6846	7470	8037	8582
8.3 Storage	91	94	96	99	102	127	136	158
8.4 Communication	4628	4345	4809	6144	5582	6097	7037	8146
9. Trade, Hotels and Restaurants	26441	27026	27507	28446	32921	37459	39739	42158
10. Banking and Insurance	4576	5765	6046	8062	8552	9848	10317	11868
11. Real Estate, Ownership of Dwelling, Business Services & Legal Services	10291	11700	13506	14333	16817	18229	20390	22960
12. Public Administration	64095	49541	58283	55613	59941	65660	76078	84377
13. Other Services	50063	47541	50559	47505	46741	51262	56363	61591
Sub -Total: TERTIARY (8-13)	165620	151897	166849	166517	177508	196159	218104	239847
14. Total State Domestic Product	326016	311170	336922	350630	397924	505003	571440	643823
15. Population (' 00)	22279	22747	23238	23712	24202	24696	25192	25692
16. Per Capita Income (Rs.)	14633	13680	14499	14787	16442	20449	22683	25059

Q : Quick Estimates

A : Advance Estimates

Table No. 3 Percentage Distribution of Gross State Domestic Product of Manipur at Current Prices by Major Sector								
Industry of Origin	1999-00	2000-01	2001-02	2002-03	2003-04	2004-05	2005-06	2006-07
							(Q)	(A)
1	2	3	4	5	6	7	8	9
1. Agriculture including livestock	85.82	84.51	84.68	84.84	86.03	86.68	86.34	86.12
2. Forestry and logging	6.29	5.96	5.53	5.38	5.04	4.48	5.00	5.52
3. Fishing	7.89	9.53	9.79	9.78	8.93	8.84	8.66	8.36
4. Mining and Quarrying	0	0	0	0	0	0	0	0
Sub-Total: PRIMARY (1-4)	100.00	100.00	100.00	100.00	100.00	100.00	100.00	100.00
5. Manufacturing	27.39	32.12	28.73	27.34	24.34	15.72	14.24	12.67
5.1 Registered	0.23	0.35	0.46	0.60	0.38	0.39	0.36	0.32
5.2 Unregistered	27.16	31.77	28.27	26.74	23.96	15.33	13.88	12.35
6. Construction	54.00	46.50	50.48	54.99	57.98	72.26	73.43	76.36
7. Electricity, gas & water supply	18.61	21.38	20.79	17.67	17.68	12.02	12.33	10.97
Sub Total: SECONDARY (5-7)	100.00	100.00	100.00	100.00	100.00	100.00	100.00	100.00
8. Transport, Storage & Communication	6.13	6.80	6.56	7.54	7.06	6.98	6.98	7.04
8.1 Railway	0.00	0.00	0.00	0.00	0.00	0.00	0.00	0.00
8.2 Transport by other means	3.28	3.87	3.62	3.79	3.86	3.81	3.69	3.58
8.3 Storage	0.06	0.07	0.06	0.06	0.06	0.06	0.06	0.06
8.4 Communication	2.79	2.86	2.88	3.69	3.14	3.11	3.23	3.40
9. Trade, Hotels and Restaurants	15.96	17.79	16.49	17.08	18.55	19.10	18.22	17.58
10. Banking and Insurance	2.76	3.80	3.62	4.84	4.82	5.02	4.73	4.95
11. Real Estate, Ownership of Dwelling, Business Services & Legal Services	6.22	7.70	8.10	8.61	9.47	9.30	9.35	9.57
12. Public Administration	38.70	32.61	34.93	33.40	33.77	33.47	34.88	35.18
13. Other Services	30.23	31.30	30.30	28.53	26.33	26.13	25.84	25.68
Sub -Total: TERTIARY (8-13)	100.00	100.00	100.00	100.00	100.00	100.00	100.00	100.00
	Q : Quick Estimates			A : Advance Estimates				

Table No.4 Percentage Distribution of Gross State Domestic Product of Manipur
by Industry of Origin at Current Prices

Industry of Origin	1999-00	2000-01	2001-02	2002-03	2003-04	2004-05	2005-06 (Q)	2006-07 (A)
1	2	3	4	5	6	7	8	9
1. Agriculture including livestock	23.09	24.98	24.36	24.56	25.48	22.60	20.70	19.34
2. Forestry and logging	1.69	1.76	1.59	1.56	1.49	1.17	1.20	1.24
3. Fishing	2.13	2.82	20.81	2.83	2.64	2.31	2.07	1.87
4. Mining and Quarrying	0.00	0.00	0.00	0.00	0.00	0.00	0.00	0.00
Sub-Total: PRIMARY (1-4)	26.91	29.56	28.76	28.95	29.61	26.08	23.97	22.45
5. Manufacturing	6.10	6.95	6.24	6.44	6.28	5.52	5.39	5.11
5.1 Registered	0.05	0.08	0.10	0.14	0.10	0.14	0.13	0.13
5.2 Unregistered	6.05	6.87	6.14	6.30	6.18	5.38	5.26	4.98
6. Construction	12.04	10.06	10.96	12.96	14.94	25.35	27.80	30.77
7. Electricity, gas & water supply	4.15	4.62	4.52	4.16	4.56	4.21	4.67	4.42
Sub Total: SECONDARY (5-7)	22.29	21.63	21.72	23.56	25.78	35.08	37.86	40.30
8. Transport, Storage & Communication	3.12	3.32	3.25	3.58	3.15	2.71	2.66	2.62
8.1 Railway	0.00	0.00	0.00	0.00	0.00	0.00	0.00	0.00
8.2 Transport by other means	1.67	1.89	1.81	1.80	1.72	1.48	1.41	1.33
8.3 Storage	0.03	0.03	0.02	0.03	0.03	0.02	0.02	0.03
8.4 Communication	1.42	1.40	1.42	1.75	1.40	1.21	1.23	1.26
9. Trade, Hotels and Restaurants	8.11	8.68	8.16	8.11	8.27	7.42	6.96	6.55
10. Banking and Insurance	1.40	1.85	1.79	2.30	2.15	1.95	1.81	1.84
11. Real Estate, Ownership of Dwelling, Business Services & Legal Services	3.16	3.76	4.01	4.09	4.23	3.61	3.57	3.57
12. Public Administration	19.66	15.92	17.30	15.86	15.06	13.00	13.31	13.10
13. Other Services	15.35	15.28	15.01	13.55	11.75	10.15	9.86	9.57
Sub -Total: TERTIARY (8-13)	50.80	48.81	49.52	47.49	44.61	38.84	38.17	37.25
14. Total State Domestic Product	100.00	100.00	100.00	100.00	100.00	100.00	100.00	100.00

Q : Quick Estimates

A : Advance Estimates

Table No.5 ANNUAL GROWTH RATE OF GROSS STATE DOMESTIC PRODUCT OF MANIPUR
BY INDUSTRY OF ORIGIN AT CURRENT PRICES

Industry of Origin	2000-01	2001-02	2002-03	2003-04	2004-05	2005-06 (Q)	2006-07 (A)
1	2	3	4	5	6	7	8
1. Agriculture including livestock	3.24	5.58	4.95	17.70	12.59	3.64	5.24
2. Forestry and logging	-0.62	-2.24	2.00	8.80	-0.84	16.32	16.32
3. Fishing	26.63	8.19	4.69	5.88	10.76	1.87	1.87
4. Mining and Quarrying							
Sub-Total: PRIMARY (1-4)	4.84	5.36	4.76	16.07	11.75	4.05	5.50
5. Manufacturing	8.60	-2.78	7.42	10.61	11.54	10.58	6.74
5.1 Registered	39.18	41.18	48.21	-21.29	75.00	12.68	6.86
5.2 Unregistered	8.34	-3.27	6.75	11.33	10.53	10.53	6.73
6. Construction	-20.26	18.04	22.97	30.94	115.25	24.08	24.70
7. Electricity, gas & water supply	6.40	5.73	-4.07	24.29	17.39	25.26	6.71
Sub Total: SECONDARY (5-7)	-7.39	8.72	12.88	24.21	72.70	22.10	19.93
8. Transport, Storage & Communication	1.67	6.04	14.71	-0.18	9.29	11.06	11.01
8.1 Railway	-20.00	0.00	25.00	20.00	16.67	0.00	0.00
8.2 Transport by other means	8.31	2.69	4.49	8.49	9.11	7.59	6.78
8.3 Storage	3.30	2.13	3.13	3.03	24.51	7.09	16.18
8.4 Communication	-6.11	10.68	27.76	-9.15	9.23	15.42	15.76
9. Trade, Hotels and Restaurants	2.21	1.78	3.41	15.73	13.78	6.09	6.09
10. Banking and Insurance	25.98	4.87	33.34	6.08	15.15	4.76	15.03
11. Real Estate, Ownership of Dwelling, Business Services & Legal Services	13.69	15.44	6.12	17.33	8.40	11.85	12.60
12. Public Administration	-22.71	17.65	-4.58	7.78	9.54	15.87	10.91
13. Other Services	-5.04	6.35	-6.04	-1.61	9.67	9.95	9.28
Sub -Total: TERTIARY (8-13)	-8.29	9.84	-0.20	6.60	10.51	11.19	9.97
14. Total State Domestic Product	-4.55	8.28	4.07	13.49	26.91	13.16	12.67

Q : Quick Estimates

A : Advance Estimates

Table No.6 Index Number of Gross State Domestic Product of Manipur by Industry of Origin at Current Prices

Industry of Origin	1999-00	2000-01	2001-02	2002-03	2003-04	2004-05	2005-06 (Q)	2006-07 (A)
1	2	3	4	5	6	7	8	9
1. Agriculture including livestock	100.00	103.24	109.00	114.40	134.65	151.61	157.13	165.36
2. Forestry and logging	100.00	99.38	97.15	99.09	107.82	106.91	124.36	144.66
3. Fishing	100.00	126.63	137.00	143.42	151.86	168.19	171.34	174.54
4. Mining and Quarrying								
Sub-Total: PRIMARY (1-4)	100.00	104.84	110.46	115.73	134.32	150.11	156.19	164.78
5. Manufacturing	100.00	108.60	105.58	113.41	125.44	139.92	154.72	165.15
5.1 Registered	100.00	139.18	196.49	291.23	229.24	401.17	452.05	483.04
5.2 Unregistered	100.00	108.34	104.79	111.87	124.54	137.66	152.15	162.39
6. Construction	100.00	79.74	94.13	115.75	151.56	326.23	404.79	504.79
7. Electricity, gas & water supply	100.00	106.40	112.50	107.92	134.14	157.46	197.24	210.47
Sub Total: SECONDARY (5-7)	100.00	92.61	100.68	113.65	141.16	243.79	297.67	356.98
8. Transport, Storage & Communication	100.00	101.67	107.82	123.68	123.46	134.93	149.86	166.37
8.1 Railway	100.00	80.00	80.00	100.00	120.00	140.00	140.00	140.00
8.2 Transport by other means	100.00	108.31	111.22	116.21	126.08	137.57	148.01	158.05
8.3 Storage	100.00	103.30	105.49	108.79	112.09	139.56	149.45	173.63
8.4 Communication	100.00	93.89	103.91	132.76	120.61	131.74	152.05	176.02
9. Trade, Hotels and Restaurants	100.00	102.21	104.03	107.58	124.51	141.67	150.29	159.44
10. Banking and Insurance	100.00	125.98	132.12	176.18	186.89	215.21	225.46	259.35
11. Real Estate, Ownership of Dwelling, Business Services & Legal Services	100.00	113.69	131.24	139.28	163.41	177.14	198.13	223.11
12. Public Administration	100.00	77.29	90.93	86.77	93.52	102.44	118.70	131.64
13. Other Services	100.00	94.96	100.99	94.89	93.36	102.39	112.58	123.03
Sub -Total: TERTIARY (8-13)	100.00	91.71	100.74	100.54	107.18	118.44	131.69	144.82
14. Total State Domestic Product	100.00	95.45	103.35	107.55	122.06	154.90	175.28	197.48
15. Per Capita Income (Rs.)	100.00	93.49	99.08	101.05	112.36	139.75	155.01	171.25

Q : Quick Estimates

A : Advance Estimates

Table No.7 GROSS STATE DOMESTIC PRODUCT OF MANIPUR BY INDUSTRY OF ORIGIN
AT CONSTANT (1999-2000) PRICES, 1999-2000 to 2006-07(A)

(Rs. in lakhs)

Industry of Origin	1999-00	2000-01	2001-02	2002-03	2003-04	2004-05	2005-06 (Q)	2006-07 (A)
1	2	3	4	5	6	7	8	9
1. Agriculture including livestock	75288	78442	81874	78629	91382	101266	103555	107493
2. Forestry and logging	5513	5862	5917	5885	6376	6345	6833	7359
3. Fishing	6925	7117	6878	6921	7358	7451	7603	7725
4. Mining and Quarrying	0	0	0	0	0	0	0	0
Sub-Total: PRIMARY (1-4)	87726	91421	94669	91435	105116	115062	117991	122577
5. Manufacturing	19907	21290	20703	21604	22516	24004	25479	26390
5.1 Registered	171	240	318	467	343	588	750	786
5.2 Unregistered	19736	21050	20385	21137	22173	23416	24729	25604
6. Construction	39241	30329	36694	42968	58177	125648	154544	190847
7. Electricity, gas & water supply	13522	13258	13236	12721	14826	13153	13181	13188
Sub Total: SECONDARY (5-7)	72670	64877	70633	77293	95519	162805	193204	230425
8. Transport, Storage & Communication	10154	9880	10122	10614	10400	11141	11882	12585
8.1 Railway	5	4	4	5	6	6	6	6
8.2 Transport by other means	5430	5978	6309	6516	6802	7323	7583	7725
8.3 Storage	91	93	91	101	88	97	104	107
8.4 Communication	4628	3805	3718	3992	3504	3715	4189	4747
9. Trade, Hotels and Restaurants	26441	26992	27422	26667	29943	33223	35034	36965
10. Banking and Insurance	4576	5648	5467	7007	6840	7457	8085	8940
11. Real Estate, Ownership of Dwelling, Business Services & Legal Services	10291	10657	11041	11439	11858	12292	12750	13231
12. Public Administration	64095	48935	56801	53417	55631	58440	66417	72246
13. Other Services	50063	46913	49932	46687	44515	47267	50804	54279
Sub -Total: TERTIARY (8-13)	165620	149025	160785	155831	159187	169820	184972	198246
14. Total State Domestic Product	326016	305323	326087	324559	359822	447687	496167	551248
15. Population (' 00)	22279	22747	23238	23712	24202	24696	25192	25692
16. Per Capita Income (Rs.)	14633	13423	14032	13688	14867	18128	19695	21456

Q : Quick Estimates

A : Advance Estimates

Table No. 8 Percentage Distribution of Gross State Domestic Product of Manipur at
Constant (1999-00) Prices by Major Sector

Industry of Origin	1999-00	2000-01	2001-02	2002-03	2003-04	2004-05	2005-06 (Q)	2006-07 (A)
1	2	3	4	5	6	7	8	9
1. Agriculture including livestock	85.82	85.80	86.48	85.99	86.93	88.01	87.77	87.70
2. Forestry and logging	6.29	6.41	6.25	6.44	6.07	5.51	5.79	6.00
3. Fishing	7.89	7.79	7.27	7.57	7.00	6.48	6.44	6.30
4. Mining and Quarrying	0.00	0.00	0.00	0.00	0.00	0.00	0.00	0.00
Sub-Total: PRIMARY (1-4)	100.00	100.00	100.00	100.00	100.00	100.00	100.00	100.00
5. Manufacturing	27.39	32.82	29.31	27.95	23.57	14.74	13.19	11.45
5.1 Registered	0.23	0.37	0.45	0.60	0.36	0.36	0.39	0.34
5.2 Unregistered	27.16	32.45	28.86	27.35	23.21	14.38	12.80	11.11
6. Construction	54.00	46.75	51.95	55.59	60.91	77.18	79.99	82.83
7. Electricity, gas & water supply	18.61	20.43	18.74	16.46	15.52	8.08	6.82	5.72
Sub Total: SECONDARY (5-7)	100.00	100.00	100.00	100.00	100.00	100.00	100.00	100.00
8. Transport, Storage & Communication	6.13	6.63	6.29	6.81	6.53	6.56	6.42	6.35
8.1 Railway	0.00	0.00	0.00	0.00	0.00	0.00	0.00	0.00
8.2 Transport by other means	3.28	4.01	3.92	4.18	4.27	4.31	4.10	3.90
8.3 Storage	0.06	0.07	0.06	0.07	0.06	0.06	0.06	0.06
8.4 Communication	2.79	2.55	2.31	2.56	2.20	2.19	2.26	2.39
9. Trade, Hotels and Restaurants	15.96	18.11	17.05	17.11	18.81	19.56	18.94	18.65
10. Banking and Insurance	2.76	3.79	3.40	4.50	4.30	4.39	4.37	4.51
11. Real Estate, Ownership of Dwelling, Business Services & Legal Services	6.22	7.15	6.87	7.34	7.45	7.24	6.89	6.67
12. Public Administration	38.70	32.84	35.33	34.28	34.95	34.41	35.91	36.44
13. Other Services	30.23	31.48	31.06	29.96	27.96	27.84	27.47	27.38
Sub -Total: TERTIARY (8-13)	100.00	100.00	100.00	100.00	100.00	100.00	100.00	100.00

Q : Quick Estimates

A : Advance Estimates

Table No.9 Percentage Distribution of Gross State Domestic Product of Manipur by Industry of Origin at Constant(1999-2000) Prices,1999-2000 to 2006-07(A)

Industry of Origin	1999-00	2000-01	2001-02	2002-03	2003-04	2004-05	2005-06 (Q)	2006-07 (A)
1	2	3	4	5	6	7	8	9
1. Agriculture including livestock	23.09	25.69	25.11	24.23	25.40	22.62	20.87	19.50
2. Forestry and logging	1.69	1.92	1.81	1.81	1.77	1.42	1.38	1.34
3. Fishing	2.13	2.33	2.11	2.13	2.04	1.66	1.53	1.40
4. Mining and Quarrying	0.00	0.00	0.00	0.00	0.00	0.00	0.00	0.00
Sub-Total: PRIMARY (1-4)	26.91	29.94	29.03	28.17	29.21	25.70	23.78	22.24
5. Manufacturing	6.10	6.97	6.35	6.66	6.26	5.36	5.13	4.79
5.1 Registered	0.05	0.08	0.10	0.15	0.10	0.13	0.15	0.14
5.2 Unregistered	6.05	6.89	6.25	6.51	6.16	5.23	4.98	4.65
6. Construction	12.04	9.93	11.25	13.24	16.17	28.07	31.15	34.62
7. Electricity, gas & water supply	4.15	4.34	4.06	3.92	4.12	2.94	2.66	2.39
Sub Total: SECONDARY (5-7)	22.29	21.24	21.66	23.82	26.55	36.37	38.94	41.80
8. Transport, Storage & Communication	3.12	3.24	3.11	3.27	2.89	2.49	2.39	2.28
8.1 Railway	0.00	0.00	0.00	0.00	0.00	0.00	0.00	0.00
8.2 Transport by other means	1.67	1.96	1.94	2.01	1.89	1.64	1.53	1.40
8.3 Storage	0.03	0.03	0.03	0.03	0.03	0.02	0.02	0.02
8.4 Communication	1.42	1.25	1.14	1.23	0.97	0.83	0.84	0.86
9. Trade, Hotels and Restaurants	8.11	8.84	8.49	8.22	8.32	7.42	7.06	6.70
10. Banking and Insurance	1.40	1.85	1.68	2.16	1.90	1.67	1.63	1.62
11. Real Estate, Ownership of Dwelling, Business Services & Legal Services	3.15	3.49	3.39	3.52	3.30	2.74	2.57	2.40
12. Public Administration	19.66	16.03	17.42	16.46	15.46	13.05	13.39	13.11
13. Other Services	15.36	15.37	15.32	14.38	12.37	10.56	10.24	9.85
Sub -Total: TERTIARY (8-13)	50.80	48.82	49.31	48.01	44.24	37.93	37.28	35.96
14. Total State Domestic Product	100.00	100.00	100.00	100.00	100.00	100.00	100.00	100.00

Q : Quick Estimates

A : Advance Estimates

Table No.10 ANNUAL GROWTH RATE OF GROSS STATE DOMESTIC PRODUCT OF MANIPUR
BY INDUSTRY OF ORIGIN AT CONSTANT(1999-2000) PRICES

Industry of Origin	2000-01	2001-02	2002-03	2003-04	2004-05	2005-06 (Q)	2006-07 (A)
1	2	3	4	5	6	7	8
1. Agriculture including livestock	4.19	4.38	-3.96	16.22	10.82	2.26	3.80
2. Forestry and logging	6.33	0.94	-0.54	8.34	-0.49	7.69	7.70
3. Fishing	2.77	-3.36	0.63	6.31	1.26	2.04	1.60
4. Mining and Quarrying							
Sub-Total: PRIMARY (1-4)	4.21	3.55	-3.42	14.96	9.46	2.55	3.89
5. Manufacturing	6.95	-2.76	4.35	4.22	6.61	6.14	3.58
5.1 Registered	40.35	32.50	46.86	-26.55	71.43	27.55	4.80
5.2 Unregistered	6.66	-3.16	3.69	4.90	5.61	5.61	3.54
6. Construction	-22.71	20.99	17.10	35.40	115.98	23.00	23.49
7. Electricity, gas & water supply	-1.95	-0.17	-3.89	16.55	-11.28	0.21	0.05
Sub Total: SECONDARY (5-7)	-10.72	8.87	9.43	23.58	70.44	18.67	19.27
8. Transport, Storage & Communication	-2.70	2.45	4.86	-2.02	7.13	6.65	5.92
8.1 Railway	-20.00	0.00	25.00	20.00	0.00	0.00	0.00
8.2 Transport by other means	10.09	5.54	3.28	4.39	7.66	3.55	1.87
8.3 Storage	2.20	-2.15	10.99	-12.87	10.23	7.22	2.88
8.4 Communication	-17.78	-2.29	7.37	-12.22	6.02	12.76	13.32
9. Trade, Hotels and Restaurants	2.08	1.59	-2.75	12.28	10.95	5.45	5.51
10. Banking and Insurance	23.43	-3.20	28.17	-2.38	9.02	8.42	10.58
11. Real Estate, Ownership of Dwelling, Business Services & Legal Services	3.56	3.60	3.60	3.66	3.66	3.73	3.77
12. Public Administration	-23.65	16.07	-5.96	4.14	5.05	13.65	8.78
13. Other Services	-6.29	6.44	-6.50	-4.65	6.18	7.48	6.84
Sub -Total: TERTIARY (8-13)	-10.02	7.89	-3.08	2.15	6.68	8.92	7.18
14. Total State Domestic Product	-6.35	6.80	-0.47	10.86	24.42	10.83	11.10

Q : Quick Estimates

A : Advance Estimates

Table No.11 Index Number of Gross State Domestic Product of Manipur by Industry of Origin at
Constant(1999-00) Prices

Industry of Origin	1999-00	2000-01	2001-02	2002-03	2003-04	2004-05	2005-06 (Q)	2006-07 (A)
1	2	3	4	5	6	7	8	9
1. Agriculture including livestock	100.00	104.19	108.75	104.44	121.38	134.50	137.55	142.78
2. Forestry and logging	100.00	106.33	107.33	106.75	115.65	115.09	123.94	133.48
3. Fishing	100.00	102.77	99.32	99.94	106.25	107.60	109.79	111.55
4. Mining and Quarrying								
Sub-Total: PRIMARY (1-4)	100.00	104.21	107.91	104.23	119.82	131.16	134.50	139.73
5. Manufacturing	100.00	106.95	104.00	108.52	113.11	120.58	127.99	132.57
5.1 Registered	100.00	140.35	185.96	273.10	200.58	343.86	438.60	459.65
5.2 Unregistered	100.00	106.66	103.29	107.10	112.35	118.65	125.30	129.73
6. Construction	100.00	77.29	93.51	109.50	148.26	320.20	393.83	486.35
7. Electricity, gas & water supply	100.00	98.05	97.88	94.08	109.64	97.27	97.48	97.53
Sub Total: SECONDARY (5-7)	100.00	89.28	97.20	106.36	131.44	224.03	265.86	317.08
8. Transport, Storage & Communication	100.00	97.30	99.68	104.53	102.42	109.72	117.02	123.94
8.1 Railway	100.00	80.00	80.00	100.00	120.00	120.00	120.00	120.00
8.2 Transport by other means	100.00	110.09	116.19	120.00	125.27	134.86	139.65	142.27
8.3 Storage	100.00	102.20	100.00	110.99	96.70	106.59	114.29	117.58
8.4 Communication	100.00	82.22	80.34	86.26	75.71	80.27	90.51	102.57
9. Trade, Hotels and Restaurants	100.00	102.08	103.71	100.85	113.24	125.65	132.50	139.80
10. Banking and Insurance	100.00	123.43	119.47	153.13	149.48	162.96	176.68	195.37
11. Real Estate, Ownership of Dwelling, Business Services & Legal Services	100.00	103.56	107.29	111.16	115.23	119.44	123.89	128.57
12. Public Administration	100.00	76.35	88.62	83.34	86.79	91.18	103.62	112.72
13. Other Services	100.00	93.71	99.74	93.26	88.92	94.42	101.48	108.42
Sub -Total: TERTIARY (8-13)	100.00	89.98	97.08	94.09	96.12	102.54	111.68	119.70
14. Total State Domestic Product	100.00	93.65	100.02	99.55	110.37	137.32	152.19	169.09
15. Population (' 00)	100.00	102.10	104.30	106.43	108.63	110.85	113.08	115.32
16. Per Capita Income (Rs.)	100.00	91.73	95.89	93.54	101.60	123.88	134.59	146.63

Q : Quick Estimates

A : Advance Estimates

Table No.12 NET STATE DOMESTIC PRODUCT OF MANIPUR BY INDUSTRY OF ORIGIN
AT CURRENT PRICES, 1999-2000 to 2006-07(A)

(Rs. in lakhs)

Industry of Origin	1999-00	2000-01	2001-02	2002-03	2003-04	2004-05	2005-06 (Q)	2006-07 (A)
1	2	3	4	5	6	7	8	9
1. Agriculture including livestock	71438	73743	77634	81413	96259	108346	111734	117057
2. Forestry and logging	5312	5287	5171	5330	5793	5663	6503	7436
3. Fishing	6231	7820	8273	8577	9240	10081	10270	10462
4. Mining and Quarrying	0	0	0	0	0	0	0	0
Sub-Total: PRIMARY (1-4)	82981	86850	91078	95320	111292	124090	128507	134955
5. Manufacturing	17484	18871	17988	19239	21088	23132	25119	26510
5.1 Registered	130	191	283	441	329	613	691	738
5.2 Unregistered	17354	18680	17705	18798	20759	22519	24428	25772
6. Construction	38170	30411	35788	43956	57629	123911	153750	191732
7. Electricity, gas & water supply	7546	7860	7616	7969	9522	10382	13005	13877
Sub Total: SECONDARY (5-7)	63200	57142	61392	71164	88239	157425	191874	232119
8. Transport, Storage & Communication	8391	8573	8746	9956	10013	10821	12011	13325
8.1 Railway	3	2	2	3	3	4	3	2
8.2 Transport by other means	4740	5026	4819	5107	5483	5968	6421	6856
8.3 Storage	88	90	91	93	95	117	125	145
8.4 Communication	3560	3455	3834	4753	4432	4732	5462	6322
9. Trade, Hotels and Restaurants	25982	26464	26715	27686	32058	36699	38876	41177
10. Banking and Insurance	4443	5575	5856	7831	8308	9575	10012	11519
11. Real Estate, Ownership of Dwelling, Business Services & Legal Services	8048	9081	10254	10554	12412	12905	14815	17102
12. Public Administration	53452	41426	48339	45926	49387	54118	62705	69545
13. Other Services	48914	46253	49028	45736	44726	48429	53248	58187
Sub -Total: TERTIARY (8-13)	149230	137372	148938	147689	156904	172547	191667	210855
14. Total State Domestic Product	295411	281364	301408	314173	356435	454062	512048	577929
15. Population (' 00)	22279	22747	23238	23712	24202	24696	25192	25692
16. Per Capita Income (Rs.)	13260	12369	12970	13250	14728	18386	20326	22495

Q : Quick Estimates

A : Advance Estimates

Table No. 13 Percentage Distribution of Net State Domestic Product of Manipur at Current Prices by Major Sector

Industry of Origin	1999-00	2000-01	2001-02	2002-03	2003-04	2004-05	2005-06 (Q)	2006-07 (A)
1	2	3	4	5	6	7	8	9
1. Agriculture including livestock	86.09	84.91	85.24	85.41	86.49	87.31	86.95	86.74
2. Forestry and logging	6.40	6.09	5.68	5.59	5.21	4.56	5.06	5.51
3. Fishing	7.51	9.00	9.08	9.00	8.30	8.13	7.99	7.75
4. Mining and Quarrying	0.00	0.00	0.00	0.00	0.00	0.00	0.00	0.00
Sub-Total: PRIMARY (1-4)	100.00	100.00	100.00	100.00	100.00	100.00	100.00	100.00
5. Manufacturing	27.66	33.02	29.30	27.03	23.90	14.69	13.09	11.42
5.1 Registered	0.20	0.33	0.46	0.62	0.37	0.39	0.36	0.32
5.2 Unregistered	27.46	32.69	28.84	26.41	23.53	14.30	12.73	11.10
6. Construction	60.40	53.22	58.29	61.77	65.31	78.71	80.13	82.60
7. Electricity, gas & water supply	11.94	13.76	12.41	11.20	10.79	6.60	6.78	5.98
Sub Total: SECONDARY (5-7)	100.00	100.00	100.00	100.00	100.00	100.00	100.00	100.00
8. Transport, Storage & Communication	5.62	6.24	5.87	6.74	6.37	6.27	6.27	6.32
8.1 Railway	0.00	0.00	0.00	0.00	0.00	0.00	0.00	0.00
8.2 Transport by other means	3.18	3.66	3.24	3.46	3.49	3.46	3.35	3.25
8.3 Storage	0.06	0.07	0.06	0.06	0.06	0.07	0.07	0.07
8.4 Communication	2.38	2.51	2.57	3.22	2.82	2.74	2.85	3.00
9. Trade, Hotels and Restaurants	17.41	19.26	17.94	18.75	20.43	21.27	20.28	19.53
10. Banking and Insurance	2.98	4.06	3.93	5.30	5.30	5.55	5.22	5.46
11. Real Estate, Ownership of Dwelling, Business Services & Legal Services	5.39	6.61	6.89	7.14	7.91	7.48	7.73	8.11
12. Public Administration	35.82	30.16	32.45	31.10	31.48	31.36	32.72	32.98
13. Other Services	32.78	33.67	32.92	30.97	28.51	28.07	27.78	27.60
Sub -Total: TERTIARY (8-13)	100.00	100.00	100.00	100.00	100.00	100.00	100.00	100.00

Q : Quick Estimates

A : Advance Estimates

Table No.14 Percentage Distribution of Net State Domestic Product
of Manipur by Industry of Origin at Current Prices

Industry of Origin	1999-00	2000-01	2001-02	2002-03	2003-04	2004-05	2005-06 (Q)	2006-07 (A)
1	2	3	4	5	6	7	8	9
1. Agriculture including livestock	24.18	26.21	25.76	25.91	27.01	23.86	21.82	20.25
2. Forestry and logging	1.80	1.88	1.72	1.70	1.62	1.25	1.27	1.29
3. Fishing	2.11	2.78	2.74	2.73	2.59	2.22	2.01	1.81
4. Mining and Quarrying	0.00	0.00	0.00	0.00	0.00	0.00	0.00	0.00
Sub-Total: PRIMARY (1-4)	28.09	30.87	30.22	30.34	31.22	27.33	25.10	23.35
5. Manufacturing	5.92	6.71	5.97	6.12	5.92	5.09	4.91	4.59
5.1 Registered	0.04	0.07	0.09	0.14	0.09	0.13	0.14	0.13
5.2 Unregistered	5.88	6.64	5.88	5.98	5.83	4.96	4.77	4.46
6. Construction	12.92	10.81	11.87	13.99	16.17	27.29	30.02	33.17
7. Electricity, gas & water supply	2.55	2.79	2.53	2.54	2.67	2.29	2.54	2.40
Sub Total: SECONDARY (5-7)	21.39	20.31	20.37	22.65	24.76	34.67	37.47	40.16
8. Transport, Storage & Communication	2.85	3.04	2.90	3.17	2.81	2.38	2.34	2.31
8.1 Railway	0.00	0.00	0.00	0.00	0.00	0.00	0.00	0.00
8.2 Transport by other means	1.61	1.78	1.60	1.63	1.54	1.31	1.25	1.19
8.3 Storage	0.03	0.03	0.03	0.03	0.03	0.03	0.02	0.03
8.4 Communication	1.21	1.23	1.27	1.51	1.24	1.04	1.07	1.09
9. Trade, Hotels and Restaurants	8.80	9.41	8.86	8.81	8.99	8.08	7.59	7.13
10. Banking and Insurance	1.50	1.98	1.94	2.49	2.33	2.11	1.96	1.99
11. Real Estate, Ownership of Dwelling, Business Services & Legal Services	2.72	3.23	3.40	3.36	3.48	2.84	2.89	2.96
12. Public Administration	18.09	14.72	16.04	14.62	13.86	11.92	12.25	12.03
13. Other Services	16.56	16.44	16.27	14.56	12.55	10.67	10.40	10.07
Sub -Total: TERTIARY (8-13)	50.52	48.82	49.41	47.01	44.02	38.00	37.43	36.49
14. Total State Domestic Product	100.00	100.00	100.00	100.00	100.00	100.00	100.00	100.00

Q : Quick Estimates

A : Advance Estimates

Table No.15 ANNUAL GROWTH RATE OF NET STATE DOMESTIC PRODUCT OF MANIPUR
BY INDUSTRY OF ORIGIN AT CURRENT PRICES

Industry of Origin	2000-01	2001-02	2002-03	2003-04	2004-05	2005-06 (Q)	2006-07 (A)
1	2	3	4	5	6	7	8
1. Agriculture including livestock	3.23	5.28	4.87	18.24	12.56	3.13	4.76
2. Forestry and logging	-0.47	-2.19	3.07	8.69	-2.24	14.83	14.35
3. Fishing	25.50	5.79	3.67	7.73	9.10	1.87	1.87
4. Mining and Quarrying							
Sub-Total: PRIMARY (1-4)	4.66	4.87	4.66	16.76	11.50	3.56	5.02
5. Manufacturing	7.93	-4.68	6.95	9.61	9.69	8.59	5.54
5.1 Registered	46.92	48.17	55.83	-25.40	86.32	12.72	6.80
5.2 Unregistered	7.64	-5.22	6.17	10.43	8.48	8.48	5.50
6. Construction	-20.33	17.68	22.82	31.11	115.02	24.08	24.70
7. Electricity, gas & water supply	4.16	-3.10	4.63	19.49	9.03	25.26	6.71
Sub Total: SECONDARY (5-7)	-9.59	7.44	15.92	23.99	78.41	21.88	20.97
8. Transport, Storage & Communication	2.17	2.02	13.83	0.57	8.07	11.00	10.94
8.1 Railway	-33.33	0.00	50.00	0.00	33.33	-25.00	-33.33
8.2 Transport by other means	6.03	-4.12	5.98	7.36	8.85	7.59	6.77
8.3 Storage	2.27	1.11	2.20	2.15	23.16	6.84	16.00
8.4 Communication	-2.95	10.97	23.97	-6.75	6.77	15.43	15.75
9. Trade, Hotels and Restaurants	1.86	0.95	3.63	15.79	14.48	5.93	5.92
10. Banking and Insurance	25.48	5.04	33.73	6.09	15.25	4.56	15.05
11. Real Estate, Ownership of Dwelling, Business Services & Legal Services	12.84	12.92	2.93	17.60	3.97	14.80	15.44
12. Public Administration	-22.50	16.69	-4.99	7.54	9.58	15.87	10.91
13. Other Services	-5.44	6.00	-6.71	-2.21	8.28	9.95	9.28
Sub -Total: TERTIARY (8-13)	-7.95	8.42	-0.84	6.24	9.97	11.08	10.01
14. Total State Domestic Product	-4.76	7.12	4.24	13.45	27.39	12.77	12.87

Q : Quick Estimates

A : Advance Estimates

Table No.16 Index Number of Net State Domestic Product of Manipur
by Industry of Origin at Current Prices

Industry of Origin	1999-00	2000-01	2001-02	2002-03	2003-04	2004-05	2005-06 (Q)	2006-07 (A)
1	2	3	4	5	6	7	8	9
1. Agriculture including livestock	100.00	103.23	108.67	113.96	134.74	151.66	156.41	163.86
2. Forestry and logging	100.00	99.53	97.35	100.34	109.05	106.61	122.42	139.98
3. Fishing	100.00	125.50	132.77	137.65	148.29	161.79	164.82	167.90
4. Mining and Quarrying								
Sub-Total: PRIMARY (1-4)	100.00	104.66	109.76	114.87	134.12	149.54	154.86	162.63
5. Manufacturing	100.00	107.93	102.88	110.04	120.61	132.30	143.67	151.62
5.1 Registered	100.00	146.92	217.69	339.23	253.08	471.54	531.54	567.69
5.2 Unregistered	100.00	107.64	102.02	108.32	119.62	129.76	140.76	148.51
6. Construction	100.00	79.67	93.76	115.16	150.98	324.63	402.80	502.31
7. Electricity, gas & water supply	100.00	104.16	100.93	105.61	126.19	137.58	172.34	183.90
Sub Total: SECONDARY (5-7)	100.00	90.41	97.14	112.60	139.62	249.09	303.60	367.28
8. Transport, Storage & Communication	100.00	102.17	104.23	118.65	119.33	128.96	143.14	158.80
8.1 Railway	100.00	66.67	66.67	100.00	100.00	133.33	100.00	66.67
8.2 Transport by other means	100.00	106.03	101.67	107.74	115.68	125.91	135.46	144.64
8.3 Storage	100.00	102.27	103.41	105.68	107.95	132.95	142.05	164.77
8.4 Communication	100.00	97.05	107.70	133.51	124.49	132.92	153.43	177.58
9. Trade, Hotels and Restaurants	100.00	101.86	102.82	106.56	123.39	141.25	149.63	158.48
10. Banking and Insurance	100.00	125.48	131.80	176.25	186.99	215.51	225.34	259.26
11. Real Estate, Ownership of Dwelling, Business Services & Legal Services	100.00	112.84	127.41	131.14	154.22	160.35	184.08	212.50
12. Public Administration	100.00	77.50	90.43	85.92	92.40	101.25	117.31	130.11
13. Other Services	100.00	94.56	100.23	93.50	91.44	99.01	108.86	118.96
Sub -Total: TERTIARY (8-13)	100.00	92.05	99.80	98.97	105.14	115.62	128.44	141.30
14. Total State Domestic Product	100.00	95.24	102.03	106.35	120.66	153.71	173.33	195.64
15. Per Capita Income (Rs.)	100.00	93.28	97.81	99.92	111.07	138.66	153.29	169.65

Q : Quick Estimates

A : Advance Estimates

Table No.17 NET STATE DOMESTIC PRODUCT OF MANIPUR BY INDUSTRY OF ORIGIN
AT CONSTANT (1999-2000) PRICES, 1999-2000 to 2006-07(A)

(Rs. in lakhs)

Industry of Origin	1999-00	2000-01	2001-02	2002-03	2003-04	2004-05	2005-06 (Q)	2006-07 (A)
1	2	3	4	5	6	7	8	9
1. Agriculture including livestock	71438	74500	77728	74350	86882	96577	98669	102402
2. Forestry and logging	5312	5672	5743	5763	6241	6156	6568	6987
3. Fishing	6231	6205	5779	5695	6236	6161	6287	6388
4. Mining and Quarrying	0	0	0	0	0	0	0	0
Sub-Total: PRIMARY (1-4)	82981	86377	89250	85808	99359	108894	111524	115777
5. Manufacturing	17484	18664	17959	18659	19280	20426	21510	22134
5.1 Registered	130	196	259	405	279	529	675	707
5.2 Unregistered	17354	18468	17700	18254	19001	19897	20835	21427
6. Construction	38170	29495	35651	41653	56556	122258	150375	185698
7. Electricity, gas & water supply	7546	6946	6296	6830	7412	4465	4474	4477
Sub Total: SECONDARY (5-7)	63200	55105	59906	67142	83248	147149	176359	212309
8. Transport, Storage & Communication	8391	8198	8100	8273	8170	8760	9315	9830
8.1 Railway	3	2	2	3	3	4	4	4
8.2 Transport by other means	4740	5168	5187	5419	5570	6035	6249	6366
8.3 Storage	88	89	87	96	82	89	94	97
8.4 Communication	3560	2939	2824	2755	2515	2632	2968	3363
9. Trade, Hotels and Restaurants	25982	26449	26860	26037	29151	32463	34278	36196
10. Banking and Insurance	4443	5558	5368	6859	6683	7289	7853	8687
11. Real Estate, Ownership of Dwelling, Business Services & Legal Services	8048	8138	8137	8164	8195	8305	8614	8939
12. Public Administration	53452	41020	47587	44710	46429	49122	55827	60727
13. Other Services	48914	45680	48537	45111	42803	45054	48425	51737
Sub -Total: TERTIARY (8-13)	149230	135043	144589	139154	141431	150993	164312	176116
14. Total State Domestic Product	295411	276525	293745	292104	324038	407036	452195	504202
15. Population (' 00)	22279	22747	23238	23712	24202	24696	25192	25692
16. Per Capita Income (Rs.)	13260	12157	12641	12319	13389	16482	17950	19625

Q : Quick Estimates

A : Advance Estimates

Table No.18 Percentage Distribution of Net State Domestic Product of Manipur at Constant (1999-2000) Prices by Major Sector

Industry of Origin	1999-00	2000-01	2001-02	2002-03	2003-04	2004-05	2005-06 (Q)	2006-07 (A)
1	2	3	4	5	6	7	8	9
1. Agriculture including livestock	86.09	86.25	87.09	86.65	87.44	88.69	88.47	88.45
2. Forestry and logging	6.40	6.57	6.44	6.71	6.28	5.65	5.89	6.03
3. Fishing	7.51	7.18	6.48	6.64	6.28	5.66	5.64	5.52
4. Mining and Quarrying	0.00	0.00	0.00	0.00	0.00	0.00	0.00	0.00
Sub-Total: PRIMARY (1-4)	100.00	100.00	100.00	100.00	100.00	100.00	100.00	100.00
5. Manufacturing	27.67	33.87	29.98	27.79	23.16	13.88	12.19	10.42
5.1 Registered	0.21	0.36	0.43	0.60	0.34	0.36	0.38	0.33
5.2 Unregistered	27.46	33.51	29.55	27.19	22.82	13.52	11.81	10.09
6. Construction	60.40	53.53	59.51	62.04	67.94	83.08	85.27	87.47
7. Electricity, gas & water supply	11.94	12.61	10.51	10.17	8.90	3.03	2.54	2.11
Sub Total: SECONDARY (5-7)	100.01	100.00	100.00	100.00	100.00	100.00	99.99	100.00
8. Transport, Storage & Communication	5.62	6.07	5.60	5.94	5.78	5.80	5.67	5.58
8.1 Railway	0.00	0.00	0.00	0.00	0.00	0.00	0.00	0.00
8.2 Transport by other means	3.18	3.83	3.59	3.89	3.94	4.00	3.80	3.61
8.3 Storage	0.06	0.06	0.06	0.07	0.06	0.06	0.06	0.06
8.4 Communication	2.38	2.18	1.95	1.98	1.78	1.74	1.81	1.91
9. Trade, Hotels and Restaurants	17.41	19.58	18.58	18.71	20.61	21.50	20.86	20.55
10. Banking and Insurance	2.98	4.11	3.71	4.93	4.73	4.83	4.78	4.93
11. Real Estate, Ownership of Dwelling, Business Services & Legal Services		0.00	0.00	0.00	0.00	0.00	0.00	0.00
	5.39	6.03	5.63	5.87	5.79	5.50	5.24	5.08
12. Public Administration	35.82	30.38	32.91	32.13	32.83	32.53	33.98	34.48
13. Other Services	32.78	33.83	33.57	32.42	30.26	29.84	29.47	29.38
Sub -Total: TERTIARY (8-13)	100.00	100.00	100.00	100.00	100.00	100.00	100.00	100.00

Q : Quick Estimates

A : Advance Estimates

Table No.19 Percentage Distribution of Net State Domestic Product of Manipur by Industry of Origin at Constant(1999-00) Prices

Industry of Origin	1999-00	2000-01	2001-02	2002-03	2003-04	2004-05	2005-06 (Q)	2006-07 (A)
1	2	3	4	5	6	7	8	9
1. Agriculture including livestock	24.18	26.94	26.46	25.45	26.81	23.73	21.82	20.31
2. Forestry and logging	1.80	2.05	1.97	1.97	1.93	1.51	1.45	1.38
3. Fishing	2.11	2.24	1.96	1.95	1.92	1.51	1.39	1.27
4. Mining and Quarrying	0.00	0.00	0.00	0.00	0.00	0.00	0.00	0.00
Sub-Total: PRIMARY (1-4)	28.09	31.23	30.39	29.37	30.66	26.75	24.66	22.96
5. Manufacturing	5.92	6.75	6.11	6.39	5.95	5.02	4.76	4.39
5.1 Registered	0.04	0.07	0.09	0.14	0.09	0.13	0.15	0.14
5.2 Unregistered	5.88	6.68	6.02	6.25	5.86	4.89	4.61	4.25
6. Construction	12.92	10.67	12.13	14.26	17.45	30.03	33.25	36.83
7. Electricity, gas & water supply	2.55	2.51	2.16	2.34	2.29	1.10	0.99	0.89
Sub Total: SECONDARY (5-7)	21.39	19.93	20.40	22.99	25.69	36.15	39.00	42.11
8. Transport, Storage & Communication	2.85	2.96	2.76	2.83	2.52	2.15	2.06	1.95
8.1 Railway	0.00	0.00	0.00	0.00	0.00	0.00	0.00	0.00
8.2 Transport by other means	1.61	1.87	1.77	1.86	1.72	1.48	1.38	1.26
8.3 Storage	0.03	0.03	0.03	0.03	0.02	0.02	0.02	0.02
8.4 Communication	1.21	1.06	0.96	0.94	0.78	0.65	0.66	0.67
9. Trade, Hotels and Restaurants	8.80	9.57	9.23	8.91	9.00	7.98	7.58	7.18
10. Banking and Insurance	1.50	2.01	1.83	2.35	2.06	1.79	1.74	1.72
11. Real Estate, Ownership of Dwelling, Business Services & Legal Services	2.72	2.94	2.77	2.80	2.53	2.04	1.90	1.77
12. Public Administration	18.09	14.84	16.20	15.31	14.33	12.07	12.35	12.05
13. Other Services	16.56	16.52	16.52	15.44	13.21	11.07	10.71	10.26
Sub -Total: TERTIARY (8-13)	50.52	48.84	49.21	47.64	43.65	37.10	36.34	34.93
14. Total State Domestic Product	100.00	100.00	100.00	100.00	100.00	100.00	100.00	100.00

Q : Quick Estimates

A : Advance Estimates

Table No.20 ANNUAL GROWTH RATE OF NET STATE DOMESTIC PRODUCT OF MANIPUR
BY INDUSTRY OF ORIGIN AT CONSTANT(1999-2000) PRICES

Industry of Origin	2000-01	2001-02	2002-03	2003-04	2004-05	2005-06 (Q)	2006-07 (A)
1	2	3	4	5	6	7	8
1. Agriculture including livestock	4.29	4.33	-4.35	16.86	11.16	2.17	3.78
2. Forestry and logging	6.78	1.25	0.35	8.29	-1.36	6.69	6.38
3. Fishing	-0.42	-6.87	-1.45	9.50	-1.20	2.05	1.61
4. Mining and Quarrying							
Sub-Total: PRIMARY (1-4)	4.09	3.33	-3.86	15.79	9.60	2.42	3.81
5. Manufacturing	6.75	-3.78	3.90	3.33	5.94	5.31	2.90
5.1 Registered	50.77	32.14	56.37	-31.11	89.61	27.60	4.74
5.2 Unregistered	6.42	-4.16	3.13	4.09	4.72	4.71	2.84
6. Construction	-22.73	20.87	16.84	35.78	116.17	23.00	23.49
7. Electricity, gas & water supply	-7.95	-9.36	8.48	8.52	-39.76	0.20	0.07
Sub Total: SECONDARY (5-7)	-12.81	8.71	12.08	23.99	76.76	19.85	20.38
8. Transport, Storage & Communication	-2.30	-1.20	2.14	-1.25	7.22	6.34	5.53
8.1 Railway	-33.33	0.00	50.00	0.00	33.33	0.00	0.00
8.2 Transport by other means	9.03	0.37	4.47	2.79	8.35	3.55	1.87
8.3 Storage	1.14	-2.25	10.34	-14.58	8.54	5.62	3.19
8.4 Communication	-17.44	-3.91	-2.44	-8.71	4.65	12.77	13.31
9. Trade, Hotels and Restaurants	1.80	1.55	-3.06	11.96	11.36	5.59	5.60
10. Banking and Insurance	25.10	-3.42	27.78	-2.57	9.07	7.74	10.62
11. Real Estate, Ownership of Dwelling, Business Services & Legal Services	1.12	-0.01	0.33	0.38	1.34	3.72	3.77
12. Public Administration	-23.26	16.01	-6.05	3.84	5.80	13.65	8.78
13. Other Services	-6.61	6.25	-7.06	-5.12	5.26	7.48	6.84
Sub -Total: TERTIARY (8-13)	-9.51	7.07	-3.76	1.64	6.76	8.82	7.18
14. Total State Domestic Product	-6.39	6.23	-0.56	10.93	25.61	11.09	11.50

Q : Quick Estimates

A : Advance Estimates

Table No.21 Index Number of Net State Domestic Product of Manipur by Industry of Origin at Constant(1999-2000) Prices

Industry of Origin	1999-00	2000-01	2001-02	2002-03	2003-04	2004-05	2005-06 (Q)	2006-07 (A)
1	2	3	4	5	6	7	8	9
1. Agriculture including livestock	100.00	104.29	108.80	104.08	121.62	135.19	138.12	143.34
2. Forestry and logging	100.00	106.78	108.11	108.49	117.49	115.89	123.64	131.53
3. Fishing	100.00	99.58	92.75	91.40	100.08	98.88	100.90	102.52
4. Mining and Quarrying								
Sub-Total: PRIMARY (1-4)	100.00	104.09	107.55	103.41	119.74	131.23	134.40	139.52
5. Manufacturing	100.00	106.75	102.72	106.72	110.27	116.83	123.03	126.60
5.1 Registered	100.00	150.77	199.23	311.54	214.62	406.92	519.23	543.85
5.2 Unregistered	100.00	106.42	101.99	105.19	109.49	114.65	120.06	123.47
6. Construction	100.00	77.27	93.40	109.12	148.17	320.30	393.96	486.50
7. Electricity, gas & water supply	100.00	92.05	83.43	90.51	98.22	59.17	59.29	59.33
Sub Total: SECONDARY (5-7)	100.00	87.19	94.79	106.24	131.72	232.83	279.05	335.93
8. Transport, Storage & Communication	100.00	97.70	96.53	98.59	97.37	104.40	111.01	117.15
8.1 Railway	100.00	66.67	66.67	100.00	100.00	133.33	133.33	133.33
8.2 Transport by other means	100.00	109.03	109.43	114.32	117.51	127.32	131.84	134.30
8.3 Storage	100.00	101.14	98.86	109.09	93.18	101.14	106.82	110.23
8.4 Communication	100.00	82.56	79.33	77.39	70.65	73.93	83.37	94.47
9. Trade, Hotels and Restaurants	100.00	101.80	103.38	100.21	112.20	124.94	131.93	139.31
10. Banking and Insurance	100.00	125.10	120.82	154.38	150.42	164.06	176.75	195.52
11. Real Estate, Ownership of Dwelling, Business Services & Legal Services	100.00	101.12	101.11	101.44	101.83	103.19	107.03	111.07
12. Public Administration	100.00	76.74	89.03	83.65	86.86	91.90	104.44	113.61
13. Other Services	100.00	93.39	99.23	92.23	87.51	92.11	99.00	105.77
Sub -Total: TERTIARY (8-13)	100.00	90.49	96.89	93.25	94.77	101.18	110.11	118.02
14. Total State Domestic Product	100.00	93.61	99.44	98.88	109.69	137.79	153.07	170.68
15. Population (' 00)	100.00	102.10	104.30	106.43	108.63	110.85	113.08	115.32
16. Per Capita Income (Rs.)	100.00	91.68	95.33	92.90	100.97	124.30	135.37	148.00

Q : Quick Estimates

A : Advance Estimates

TABLE NO. 22. NET PER CAPITA INCOME OF STATES,UTs AND ALL INDIA
AT CURRENT PRICES

(in Rs.)

States	1999-00	2000-01	2001-02	2002-03	2003-04	2004-05	2005-06	2006-07
1	2	3	4	5	6	7	8	9
Arunachal Pradesh	14107	15538	17893	17434	19707	22542	23788	N.A.
Assam	12269	12797	13153	14600	15687	16825	18598	20143
Bihar	5598	6350	6093	6873	6885	7284	7713	8042
Chhattisgarh	11761	10985	12443	13145	16098	18068	20151	N.A.
Delhi	38682(P)	41436(P)	43587(P)	45483(P)	49825(P)	55215(P)	61676(P)	N. A.
Gujarat	18864	18392	19823	22683	26922	29468	34157	N.A.
Haryana	21966	24138	26077	28259	31509	35044	38832	N.A.
Himachal Pradesh	20806	22795	24608	26627	28333	31140	33805	N.A.
Karnataka	16603	17496	17923	19338	20900	23848	27101	N.A.
Kerala	19736	20683	21572	23872	26971	29693	32852	N.A.
Madhya Pradesh	12010	11465	12516	12239	14382	14953	15853	N.A.
Maharashtra	23340	22992	24450	26697	29770	32979	37081	N.A.
Manipur	13260	12369	12970	13250	14728	18386	20326	22495
Meghalaya	13088	14632	15813	16803	18135	19572	N.A.	N.A.
Mizoram	16443	17826	19430	20896	21963	22417	N.A.	N.A.
Nagaland	N.A.	N.A.	N.A.	N.A.	N.A.	N.A.	N.A.	N.A.
Orissa	10485	10622	11400	11942	14282	16002	17299	18690
Puducherry	30865	36220	39138	44903	48547	44908	48477	52669
Sikkim	14890	16077	17324	19428	21476	23791	26412	29521
Tamil Nadu	19378	20927	20924	21813	24106	27137	29958	32733
Tripura	14119	15983	18368	19059	21138	22836	24706	N.A.
West Bengal	15785	16402	17845	18805	20769	22534	25156	N.A.
All India	15839	16648	17800	18899	20936	22946	25716	29069

N.A. - Not Available P-Provisional

Source - (1) SDP publication of the concerned States.

(2) National Accounts Statistics,2007.

TABLE NO. 23 NET PER CAPITA INCOME OF STATES, UTs AND ALL INDIA
AT CONSTANT (1999-2000) PRICES

(in Rs.)

States	1999-00	2000-01	2001-02	2002-03	2003-04	2004-05	2005-06	2006-07
1	2	3	4	5	6	7	8	9
Arunachal Pradesh	14107	15003	17018	16119	17601	19506	20037	N.A.
Assam	12269	12447	12628	13233	13856	14351	14950	15585
Bihar	5598	6495	5872	6585	6118	6505	6395	6594
Chhattisgarh	11761	11037	12234	11836	13811	14710	16365	N. A.
Delhi	38682(P)	39817(P)	40301(P)	41216(P)	43030(P)	46270(P)	49172(P)	N.A.
Gujarat	18864	17227	18200	19509	22387	23761	26543	N.A.
Haryana	21966	22995	23809	24676	26353	28119	29887	N.A.
Himachal Pradesh	20806	21824	22543	23234	24377	26054	27162	N.A.
Karnataka	16603	17405	17553	18183	18505	20315	21629	N.A.
Kerala	19736	20448	21087	22404	23986	25687	27746	N.A.
Madhya Pradesh	12010	10709	11449	10703	11790	11839	12265	N.A.
Maharashtra	23340	22151	22622	23939	25265	27040	29085	N.A.
Manipur	13260	12157	12641	12319	13389	16482	17950	19625
Meghalaya	N.A.	N.A.	N.A.	N.A.	N.A.	N.A.	N.A.	N.A.
Mizoram	16443	16635	17245	18429	18555	18904	N.A.	N.A.
Nagaland	N.A.	N.A.	N.A.	N.A.	N.A.	N.A.	N.A.	N.A.
Orissa	10485	10361	10987	10704	11995	13162	13748	14371
Puducherry	30865	34408	36230	39159	40338	34863	36397	38488
Sikkim	14890	15305	15953	17065	18159	19332	20609	22001
Tamil Nadu	19378	20249	19691	19628	20672	22835	24308	25898
Tripura	14119	14933	16947	17752	18554	19825	21231	N.A.
West Bengal	15785	16096	17192	17605	18341	19506	20850	N.A.
All India	15839	16133	16762	17075	18263	19297	20734	22379

N.A. - Not Available

P-Provisional

Source -(1)SDP publication of the concerned States.

(2) National Accounts Statistics,2007.

PART - III

SOURCE OF DATA AND METHODOLOGY

Item	Source of data	Method of estimation		Remarks
		At current prices	At constant (1999-00) prices	
1	2	3	4	5
1.Agriculture,including livestock				
(a) Value of output- (1) Major and minor crops				
(i) Major crops (paddy, maize sesamum, rape & mustard, soyabean, cotton, jute and sugarcane)	Directorate of Economics and Statistics, for production State Directorates of Economics (DES) and Statistics for Area and Production of Cereal crops, and area and prices of cereal crops.	Value of output = production * Current year price	Value of output = production * base year price	
(ii) Minor crops (potato, onion, banana, tapioca, sweet potato, ginger, garlic, chillies, turmeric and coriander)	-same as above-	same as above	same as above	
(iii) other pulses	Crop Estimation Survey data for area State DESs for price of pea	same as above	same as above	
(2) Commercial Crops				
(i) tea	State DESs for production State DESs for prices	same as above	same as above	
(ii) rubber	Rubber Board for production CSOs for prices	same as above	same as above	

Item	Source of data	Method of estimation		Remarks
		At current prices	At constant (1999-00) prices	
1	2	3	4	5
(iii) horticulture crops (other than those covered in the minor crops (banana, onion, potato, sweet potato and tapioca)	National Horticulture Board (NHB) for production State DESs for prices	same as above	same as above	Data, for area and production of Fruits & Vegetables except Banana, Sweet potato and tapioca (1999-00) Pineapple are supplied by the CSO.
(iv) flowers (separately for cut flowers and sticks)	State DESs & NHB for production State DESs & CSO for prices	same as above	same as above	
(3) Miscellaneous Crops				
(i) other fruits and vegetables	State DESs & NHB for production State DESs & CSO for prices	same as above	same as above	
(ii) Grass	DESag for area (ha) under the crops State DESs & CSO for prices	same as above	same as above	
(4) By products				
(i) Paddy straw (ii) Maize Straw (iii) Cotton sticks (iv) Jute sticks (v) Sugarcane trash	DESAg for area (ha) Cost of cultivation studies for Value per hectare	Value of output = area * Value per hectare	Value of output = area * Value per hectare in the base year	
(5) Other products				
(i) gur	State DESs for prices	Value of output = Prodn. * current year prices Production of gur = about 0.1 * sugar cane used for gur making (derived as a residual from total sugarcane production of that part which is used for chewing, for seed, crushed by factories and in unregistered manufacturing	Value of output = production * base year prices	

Item	Source of data	Method of estimation		Remarks
		At current prices	At constant (1999-00) prices	
1	2	3	4	5
(ii) bagasse	State DESs for prices	Value of output = Production * current year prices Production of bagasse = 35% * sugar cane used for gur making	Value of output = production * base year prices	
(iii) kitchen garden	Result of NSSO survey on landholding for area (ha.) under kitchen garden	Value of output = area * value per hectare	Value of output = area * value per hectare at base year	
(6) Livestock products				
(i) milk and eggs	Directorate of Vet. and Animal Husbandry for production State DESs for prices	Value of output = production* current year price	Value of output = production * base year price	

Item	Source of data	Method of estimation		Remarks
		At current prices	At constant (1999-00) prices	
1	2	3	4	5
(ii) meat (unregistered meat if not included is to be estimated on the basis of the rates prevalent in the neighbouring states)	State DESs for production and prices	Value of output = production (after adjusting for the quantity produced by the manufacturing sector) * Current year price	Value of output = production (after adjusting for the quantity produced by the manufacturing sector) * base year price	
(iii) fats	State DESs for no. of animals slaughtered and price Directorate of Marketing Inspection (DMI) reports for mortality rates, National Accounts Division (NAD) for rates and ratios	Value of output = no. of animals slaughtered and fallen * Yield rate* current year price	Value of output = no. of animals slaughtered and fallen * Yield rate* base year price	
(iv) heads and legs	State DESs for no. of animals slaughtered and fallen and price National Accounts Division (NAD) for rates and ratios	Value of output = no. of animals slaughtered and fallen * Yield rate* current year price	Value of output = no. of animals slaughtered and fallen * Yield rate* base year price	

Item	Source of data	Method of estimation		Remarks
		At current prices	At constant (1999-00) prices	
1	2	3	4	5
(v) edible offals and glands	State DESs for no. of animals slaughtered and fallen and price (NAD) for rates and ratios	Value of output = no. of animals slaughtered and fallen (cattle, buffalo, goat, sheep and pigs)* Yield rate* current year price	Value of output = no. of animals slaughtered and fallen * Yield rate* base year price	
(vi) poultry meat	Indian livestock census for population State DESs for prices	Value of output is estimated separately for four components (a) chicken and ducklings killed, (b) adult fowls killed, (c) adult ducks killed and (d) other poultry killed multiplied by the respective prices (a) Chickens & ducklings killed = total poultry of current year (chicks survived + 50% of hens & cock popn. + 50% of ducks & drakes popn. + popn. of chickens, ducklings, 37.5% of other poultry) – total poultry	Same procedure as adopted for the current price estimates, but the priced used are the respective base year prices	

Item	Source of data	Method of estimation		Remarks
		At current prices	At constant (1999-00) prices	
1	2	3	4	5
		<p>of next year (popn. of hens + cocks + ducks + drakes + chickens + other poultry), where chicks survived = $1/3^{\text{rd}}$ of eggs kept for hatching (eggs kept for hatching = fixed ratio * total egg production.)</p> <p>(b) adult fowls killed = 50% popn. of hens & cocks</p> <p>© adult ducks killed = 50% of popn. of ducks & drakes</p> <p>(d) other poultry = 37.5% of other poultry</p>		
(vii) meat by products – guts, blood, oesophagus, useless meat	State DESs for no. of animals slaughtered and prices (NAD) for rates and ratios	Value of output = no. of animals slaughtered (cattle, buffalo, goats, sheep and pigs)* yield rate * current year price	Value of output = no. of animals slaughtered (cattle, buffalo, goats, sheep and pigs)* yield rate * base year price	
(viii) meat by products –bones, horns, hoofs, tial stumps	State DESs for no. of animals slaughtered & fallen and prices(NAD) for rates and ratios	Value of output = no. of animals slaughtered and fallen (cattle, buffalo, goats, sheep and pigs)* yield rate * current year price	Value of output = no. of animals slaughtered and fallen (cattle, buffalo, goats, sheep and pigs)* yield rate * base year price	
(ix) cattle/buffalo hides	State DESs for no. of animals slaughtered & fallen and prices	Value of output = no. of animals slaughtered and fallen (cattle/ buffalo) * current year price	Value of output = no. of animals slaughtered and fallen (cattle/ buffalo,)* base year price	

Item	Source of data	Method of estimation		Remarks
		At current prices	At constant (1999-00) prices	
1	2	3	4	5
(x) goat/ sheep skin	State DESs for no. of animals slaughtered & fallen and prices	Value of output = no. of animals slaughtered and fallen (goat/sheep) * current year price	Value of output = no. of animals slaughtered and fallen (goat/sheep) * base year price	
(xi) goat/pig hair	ILC for population DMI reports and NAD for yield rates State DESs for prices	Value of output = Yield rate * popn. of goat/ pig * current year price	Value of output = Yield rate * popn. of goat/ pig * base year price	
(xii) dung (a) dung cakes (b) dung manure (c) dung used for other purposes	ISS for yield rates of dung and utilization rates ILC for population State DESs for prices and conversion rates	Quantity output of dung = popn. of cattle and buffalo * yield rate (a) dung cakes Value of output = 0.4 * utilization rate for estimating dung used for making cakes * dung production * current year price (b) dung manure Value of output = utilization rate for estimating dung used for making manure purpose * dung production * current year price © dung used for other purposes Value of output = utilization rate for estimating dung used for other purposes * dung production * current year price	Same procedure as adopted for the current price estimates, but the prices used are the respective base year prices	

Item	Source of data	Method of estimation		Remarks
		At current prices	At constant (1999-00) prices	
1	2	3	4	5
(xi ii) other products- silk, ere, tassar, muga and honey and bee wax	Central silk board for production and prices of silk and KVIC for production and prices of honey	Value of output = quantity * price	Value of output = quantity * base year price	
(xiv) increment in livestock	ILC for population State DESs for prices	Value of output = additions to livestock popn. during the year * price	Value of output = additions to livestock popn. during the year * base year price	
(7) Irrigation System				
(i) operation of irrigation system	Budget documents of state govt.	Gross value added = compensation of employees + operating surplus + consumption of fixed capital	Benchmark estimates are moved with the index of area irrigated	
(b) Inputs	Supplied by CSO			
2. Forestry				
Value of output (1) Industrial wood (i) Recorded	State forest department (SFD) for production State DESs for prices	Value of output = production * current year price	Value of output = production * base year price	
(ii) unrecorded	Expert Committee	Value of output = 0.1 * value of output of recorded production	Value of output = 0.1 * value of output of recorded production	
(2) Fuelwood	NSS Consumer Expenditure Surveys, 55 th round (1999-00) and 50 th rounds (1993-94) for rates of consumption of firewood & chips by the households, move for the current year Office of the Registrar General of India for popn. projection	Total production of fuel wood = rates of consumption per person * popn. (separately for rural and urban) – agricultural by products used as fuel wood (output of certain by products in agriculture sector) Total value of output = 1.06 * production of fuel wood estimate	Same procedure as adopted for the current price estimates, but the prices used are the respective base year prices	

Item	Source of data	Method of estimation		Remarks
		At current prices	At constant (1999-00) prices	
1	2	3	4	5
	Enterprise Survey results for consumption of firewood & chips by the industries State DESs for prices	above * current year price (the addition of 6 per cent is to account for the consumption of fuel wood by non-households, namely, the enterprises, which is derived from the data of enterprise surveys for the benchmark year)		
(3) minor forest products	SFDs for value of output Ministry of Industry for Wholesale Price Index (WPI)	Value of output estimates are directly furnished by the SFDs	Value of output at current prices deflated by the relevant WPI	
Inputs of forestry sector	Adhoc norms	Value of inputs = 0.1 * total value of output	Value of inputs = 0.1 * total value of output	
3. Fishing				
Value of output (1) Inland fish	Fisheries Department, Manipur for production, prices and disposals DES, Manipur for weighted prices of Inland fish	Value of output = fish sold in raw form * prices (inland fish + fish sold as salted and dried * prices)	Same procedure as adopted for the current prices estimates, but the prices used are the respective base year prices	
(2) subsistence fish	DES, Manipur for value added for subsistence fish	Value of output = .125 * production of inland fish * price (for the states for which the production of subsistence fish is not included in the production of inland fish)	Value of output = .125 * production of inland fish * base year price	12.5% prescribed by the CSO

Item	Source of data	Method of estimation		Remarks
		At current prices	At constant (1999-00) prices	
1	2	3	4	5
4. Mining & Quarrying				
Major minerals	Indian Bureau of Mines for production, prices and inputs (except salt)	Value of output = production * current year price Input rates as directly available from IBM	Value of output = production * base year price Input rates are directly as available from IBM	Estimates are obtained from the CSO
5. Manufacturing (Registered)	CSO for data related with Annual Survey of Industries (ASI) CSO for Index of Industrial Production (IIP) & (WPI)	Value of output, material inputs and GVA are obtained from the results of ASI The IIP and WPI based on NIC-98 and NIC-04 (3 digit code) are used to arrive at quick estimates	Current price estimates are deflated with the relevant WPI	

Item	Source of data	Method of estimation		Remarks
		At current prices	At constant (1999-00) prices	
1	2	3	4	5
6. Manufacturing (Unregistered)	Third All India Census of Small Scale Industrial(SSI) Units, 2001-02 conducted by the Office of the Development Commissioner for Small Scale Industries (DCSSI) for value added per worker (VAPW) of SSI units Survey on unorganized manufacturing sector conducted by the NSSO, 2000-01 for VAPW NSS/Population Census for Workforce (WF) estimates CSO for the IIP& WPI	Benchmark estimates of GDP for the year 1999-00 = value added per worker(VAPW) * number of workers (separately for compilation category level of NIC for the segments of SSI and non-SSI, which comprises of directory manufacturing establishments, non-directory manufacturing establishments and own-account manufacturing enterprises) The benchmark industry wise estimates are moved with the relevant IIP and the WPI	The benchmark industry wise estimates are moved with the relevant IIP	The workforce estimates are worked out by the CSO.
7. Electricity, gas and water supply				
(1) Electricity	State Budget for NVA from DCU CSO for CFC of DCU and GVA of NDCUs. Electricity Deptt. , Manipur for data on sales of electricity	GVA for DCUs is derived from the Budget Analysis and NDCUs are supplied by CSO	Base year estimates moved with the index of quantum sales of electricity	
(2) Water Supply	State Budget for NVA CSO for CFC	NVA is derived from the Budget Analysis.	Current price estimates are deflated with the CPI(IW)	Salaries, Wages and Pension taken together constitutes the NVA from Water Supply.
(3) Gobar Gas	Ministry of Non- Conventional Energy for no. of bio gas plants Khadi & Village Industries Commission (KVIC) for value of production	GVA is derived by multiplying the cumulative no. of gober gas plant and value per plant.	Base year estimate moved with the index of no. of bio gas plants.	Data are obtained from the CSO

Item	Source of data	Method of estimation		Remarks
		At current prices	At constant (1999-00) prices	
1	2	3	4	5
7. Construction				
(a) public sector	Budget documents of State and Central Govt. for outlays on construction CSO for GVA from NDCUs and Plan Schemes and for Supra regional sectors like Railways, Communication and Banking and Finances	Estimates as obtained from the Budget Analysis and CSO	Current price estimates are deflated by CPI (IW)	Expenditure approach is followed
(b) Household sector	AIDIS, 2002-03 for investment in rural and urban residential buildings Population Census for no. of dwellings CSO for proportion/ratio NSSO 58 th round results report no. 488-Housing condition in India	GVA is derived by multiplying GVO with the GVA/GVO proportion furnished by the CSO	Current price estimates are deflated by CPI(IW) or CPI(AL) as applicable	
(c) Residual	CSO	For Residual sector, the estimates are obtained from the CSO	Current price estimates are deflated by CPI(AL) & CPI(IW)	

Item	Source of data	Method of estimation		Remarks
		At current prices	At constant (1999-00) prices	
1	2	3	4	5
Trade-(1) Public sector	CSO	CSO estimates are adopted	Current price estimates are deflated by WPI	Income method is followed
(2) Private organized sector	CSO	CSO estimates are adopted	Base year estimates is moved with the index of gross trading income of commodity producing sectors evaluated at constant prices	Income method is followed
Trade-(3)Private unorganized sector (i) wholesale trade (except motor vehicles) + auctioning activity (ii) Retail trade except motor vehicles (iii) Repair of personal household goods (iv) Maintenance and repair of motor vehicles	Informal sector survey, NSS 55 th round 1999-2000 for VAPW EUS, NSS 55 th round 1999-2000/ Population Census2001 for WF estimates DES, Manipur for gross value output from commodity producing sectors both at current and constant prices Agricultural Statistics at a Glance and Ministry of Agriculture and DMI for marketable surplus ratios Informal sector survey, NSS 55 th round 1999-2000 for VAPW EUS, NSS 55 th round 1999-2000/ Population Census2001 for WF estimates “ Motor Transport Statistics of India” M/o shiping, Road Transport & Highways Labour Bureau for CPI-IW	Base year GVA(VAPW*WF) is moved with the index of gross trading income of commodity producing sectors evaluated at current prices	Base year estimate is moved with the index of gross trading income of commodity producing sectors evaluated at constant prices	The data are obtained from the CSO.

Item	Source of data	Method of estimation		Remarks
		At current prices	At constant (1999-00) prices	
1	2	3	4	5
<p>Trade-(3)Private unorganized sector</p> <p>(i) wholesale trade (except motor vehicles) + auctioning activity</p> <p>(ii) Retail trade except motor vehicles</p> <p>(iii) Repair of personal household goods</p> <p>(iv) Maintenance and repair of motor vehicles</p>	<p>Informal sector survey, NSS 55th round 1999-2000 for VAPW EUS, NSS 55th round 1999-2000/ Population Census2001 for WF estimates</p> <p>DES, Manipur for gross value output from commodity producing sectors both at current and constant prices Agricultural Statistics at a Glance and Ministry of Agriculture and DMI for marketable surplus ratios Informal sector survey, NSS 55th round 1999-2000 for VAPW EUS, NSS 55th round 1999-2000/ Population Census2001 for WF estimates “ Motor Transport Statistics of India” M/o shipping, Road Transport & Highways Labour Bureau for CPI-IW</p>	<p>Base year GVA(VAPW*WF) is moved with the index of gross trading income of commodity producing sectors evaluated at current prices</p>	<p>Base year estimate is moved with the index of gross trading income of commodity producing sectors evaluated at constant prices</p>	<p>The data are obtained from the CSO.</p>
<p>(v) Sale of motor vehicle</p>	<p>Informal sector survey, NSS 55th round 1999-2000 for VAPW</p>	<p>Base year GVA(VAPW*WF) is moved with the indicator based on taxes and fees</p>	<p>Base year estimate is moved with the index of ‘sale of no. of motor vehicle’.</p>	

Item	Source of data	Method of estimation		Remarks
		At current prices	At constant (1999-00) prices	
1	2	3	4	5
	EUS, NSS 55 th round 1999-2000/ Population Census2001 for WF estimates “ Motor Transport Statistics of India” M/o shipping, Road Transport & Highways			
9. Hotels and restaurants				
(1) public sector	Budget documents for DCUs for value of output and inputs Annual reports of the NDCUs for value of output and inputs	CSO estimates are adopted	Current price estimates are deflated by WPI	
(2) private organized	RBI’s study of the finances of a sample of companies for GVA Ministry of Company Affairs for the total paid-up capital CSO	Base year estimates moved with GTI index at current prices	Base year estimate is moved with GTI index at constant prices.	
(3) Private unorganized - (i) Hotels (ii) Restaurants	Enterprise survey, NSS 57 th round 2001-02 for VAPW EUS, NSS 55 th round 1999-2000/ Population Census2001 for WF estimates	Base year estimate (VAPW*WF) is moved with the index of gross trading income of commodity producing sectors, at current prices	Base year estimate is moved with the index of gross trading income of commodity producing sectors at constant prices .	

Item	Source of data	Method of estimation		Remarks
		At current prices	At constant (1999-00) prices	
1	2	3	4	5
	Gross value output from commodity producing sectors both at current and constant prices,DES Trade and transport margins from private final consumption expenditure Agricultural Statistics at Glance, Ministry of Agriculture and DMI for marketable surplus ratios as supplied by CSO			
(10) Railways				
(1) railways	Annual railway budget for compensation of employees and operating surplus Railway Board for data on passenger and goods traffic	Estimated through income method (sum of compensation of employees, operating surplus and consumption of fixed capital)	Base year estimate moved with combined indicator of passenger kilometers and net tonne kilometers, combined with their earnings in the base year as weights.	Railways is a supra-regional sector. The estimates are prepared by the CSO.
11. Transport by other means				
(1) Public (i) Mechanised road transport	Budget documents for DCUs for value of output and inputs Annual reports of the NDCUs for value of output and inputs	Income method	Current price estimates are deflated using CPI(AL) and CPI(IW)	Current price estimates are obtained from the CSO
(ii) Air transport	Budget documents for DCUs Annual reports of the NDCUs	Income method	Current price estimates are deflated using CPI(AL) and CPI(IW)	Current price estimates are obtained from the CSO

Item	Source of data	Method of estimation		Remarks
		At current prices	At constant (1999-00) prices	
1	2	3	4	5
(2) Private organised (i) Air transport	Annual reports of companies	GVA / W * WF	Current price estimates are deflated using CPI(IW)	Current price estimates are obtained from the CSO
(3) Private unorganised (i) Mechanised road transport	Enterprise survey, NSS 57 th round 2001-02 for VAPW EUS, NSS 55 th round 1999-2000/ Population Census 2001 for WF estimates “ Motor Transport Statistics of India” M/o shipping, Road Transport & Highways for category wise no. of registered vehicles Labour Bureau for CPI-IW	GVA / W * WF	Current price estimates are deflated using CPI(AL) and CPI(IW)	
(ii) Non-mechanised road transport	Enterprise survey, NSS 57 th round 2001-02 for VAPW EUS, NSS 55 th round 1999-2000/ Population Census 2001 for WF estimates Labour Bureau for CPI-IW	GVA / W * WF	Current price estimates are deflated using CPI(AL) and CPI(IW)	

Item	Source of data	Method of estimation		Remarks
		At current prices	At constant (1999-00) prices	
1	2	3	4	5
(4) Services incidental to transport (i) Unorganised	Enterprise survey, NSS 57 th round 2001-02 for VAPW EUS, NSS 55 th round 1999-2000/ Population Census2001 for WF estimates Labour Bureau for CPI-IW	GVA / W * WF	Current price estimates are deflated using CPI(AL) and CPI(IW)	
12. Storage				
Storage n.e.c.	Enterprise survey, NSS 57 th round 2001-02 for VAPW EUS, NSS 55 th round 1999-2000/ Population Census2001 for WF estimates Labour Bureau for CPI-IW DES, Manipur for agriculture production	CSO estimated are adopted	Current price estimates of GVA are deflated with index of agriculture production	

Item	Source of data	Method of estimation		Remarks
		At current prices	At constant (1999-00) prices	
1	2	3	4	5
13. Communication				
(1) public	Demands for Grants relating to posts and telecommunication	Estimated through income method (sum of compensation of employees, operating surplus and consumption of fixed capital)	Base year estimate moved with a combined weighted index of no. of money orders, no. of telegrams, no. of telephones and no. of postal articles, with respective earning in the base year as weights	Comm. Public is a Supra-Regional sector, the estimates are prepared by CSO
(2) Private communication services Courier services Cable operators Other communication	Employment and unemployment survey data from NSS 55 th round and population census, 2001 estimates of WF, Value added per worker from Enterprise Survey, 57 th round CPI(AL) and CPI(IW) No. of Cellular subscribers	Base year estimates = WF*VAPW For other years Courier services and cable operators WF is projected using the Inter-survey avg. compound growth and VAPW of rural and urban sectors with the CPI for agriculture labourer and CPI(IW) respectively Other communication WF is	The constant price estimates for rural and urban are obtained by deflating current price estimates with CPI(AL) and CPI(IW) respectively	

Item	Source of data	Method of estimation		Remarks
		At current prices	At constant (1999-00) prices	
1	2	3	4	5
		Projected with total stock of telephone connections by private sector and VAPW with respective CPIs, for rural and urban		
14.Real estate, Ownership of Dwellings, Business services				
(1) Real estate	Employment and unemployment survey data from NSS 55 th round and population census, 2001 estimates of WF, Value added per worker from Enterprise Survey, 57 th round CPI(AL) and CPI(UNME)	Base year estimates = WF*VAPW For other years, WF is projected using the Inter-survey growth rate and VAPW is projected with the index of CPI(AL) and CPI(UNME) respectively, for rural and urban areas	The constant price estimates for rural and urban are obtained by deflating current price estimates with CPI(AL) and CP(UNME) respectively	
(2) Ownership of dwellings	2001 Census residential houses in urban and rural areas and NSS 55 th round results for rent per household separately for rural and urban areas CPI(AL), CPI(IW) and CPI(UNME) of house rent sub group	The GVA for the ownership of dwellings is equivalent to gross rental of the residential census houses less the cost of repairs and maintenance Base year estimate = no. of census houses (rural and urban separately) * gross rental For other years, Rent per household moved with the index house rent (separately for rural and urban areas) and total residential houses with the inter-censal growth rate of dwellings to get the estimates of gross rental	The constant price estimates are obtained by multiplying the base year rent per household with the projected residential census houses	

Item	Source of data	Method of estimation		Remarks
		At current prices	At constant (1999-00) prices	
1	2	3	4	5
(3) Legal services	Employment and unemployment survey data from NSS 55 th round and population census, 2001 estimates of WF, Value added per worker from Enterprise Survey, 57 th round CPI(AL) and CPI(IW)	Base year estimates = WF*VAPW For other years, WF is projected using the Inter-survey avg. compound growth rate and VAPW is projected with the index of CPI (AL) and CPI(UNME) respectively, for rural and urban areas	The constant price estimates for rural and urban are obtained by deflating current price estimates with CPI(AL) and CPI(UNME) respectively	
(4) Accounting	Employment and unemployment survey data from NSS 55 th round and population census, 2001 estimates of WF, Value added per worker from Enterprise Survey, 57 th round CPI(AL) and CPI(IW)	Base year estimates = WF*VAPW For other years, WF is projected using the Inter-survey avg. compound growth rate and VAPW is projected with the index of CPI(AL) and CPI(IW) respectively, for rural and urban areas	The constant price estimates for rural and urban are obtained by deflating current price estimates with CPI(AL) and CPI(IW) respectively	
(5) Computer related services	NASSCOM data of output Annual reports/accounts of software companies for GVA to GVO ratio CPI(AL) and CPI(IW)	GVA to GVO ratio of software companies applied on NASSCOM data of output to get the estimates of GVA for organized activities For others, Base year estimate = WF* VAPW Subsequent years: WF is projected using NASSCOM data of output and VAPW is projected with the index of CPI(AL) and CPI(IW) respectively for rural and urban areas	The constant price estimates for rural and urban are obtained by deflating current price estimates with CPI(AL) and CPI(IW) respectively	

Item	Source of data	Method of estimation		Remarks
		At current prices	At constant (1999-00) prices	
1	2	3	4	5
(6) Renting of Machinery	Employment and unemployment survey data from NSS 55 th round and population census, 2001 estimates of WF, Value added per worker from Enterprise Survey, 57 th round CPI(AL) and CPI(IW)	Base year estimates = WF*VAPW For other years, WF is projected using popn. growth rate and VAPW is projected with the index of CPI(AL) and CPI(IW) respectively, for rural and urban areas	The constant price estimates for rural and urban have been obtained by deflating current price estimates with CPI(AL) and CPI(IW) respectively	
(7) Research & Development	Employment and unemployment survey data from NSS 55 th round and population census, 2001 estimates of WF, Value added per worker from Enterprise Survey, 57 th round CPI(AL) and CPI(IW)	Base year estimates = WF*VAPW For other years, WF is projected using popn. growth rate and VAPW is projected with the index of CPI(AL) and CPI(IW) respectively, for rural and urban areas	The constant price estimates for rural and urban have been obtained by deflating current price estimates with CPI(AL) and CPI(IW) respectively	
15. Banking and Insurance				
(1) Commercial Banks	RBI for group-wise data on earnings and expenses of banks	Direct data	Current price estimates deflated by Implicit GDP deflator	Banking and Insurance is a Supra-Regional sector, the estimates are prepared by CSO
(2) Banking department of RBI	RBI for group-wise data on earnings and expenses of banks	Direct data	Current price estimates deflated by Implicit GDP deflator of Commercial Banks	
(3) non-banking financial institutions	Annual reports of Non-departmental non-banking financial companies and corporations containing their annual accounts Annual accounts of private	Direct data on non-departmental financial companies and corporations, and HDFC For private non-banking financial companies the data on income and expenditure for a set of sample	Current price estimates deflated by Implicit deflator of Commercial Banks	

Item	Source of data	Method of estimation		Remarks
		At current prices	At constant (1999-00) prices	
1	2	3	4	5
	Financial companies (ICICI and HDFC) RBI Bulletin	Companies published in RBI Bulletin is blown up with the total paid up capital of non govt. non banking financial companies (excluding HDFC) For the unorganized financial sector, the GDP = 1/3 of GDP estimates in the organized sector (Non Banking Financial Companies)		
(4) post office saving bank (POSB), employees provident fund organization (EPFO) and postal life insurance	Budget Documents	Direct data	Current price estimates deflated with CPI(IW)	
(5) co-operative credit societies	NABARD for income and expenditure	Direct data	Base year estimates are moved with the average of index of deflated deposits and index of membership	
(6) Life insurance	Annual report of LIC for economic classification	Direct data	Base year estimates are moved with the average of deflated indices of change in life fund and sum assured	
(7) Non-life insurance	Annual reports of Insurance Companies for economic classification	Direct data	Base year estimates are moved with the deflated index of change in ' Gross premium less claims', for non-life insurance other	

Item	Source of data	Method of estimation		Remarks
		At current prices	At constant (1999-00) prices	
1	2	3	4	5
			Than ESIC. For ESIC, the current price estimates are deflated with the WPI	
16. Other Services				
(1) Education, Medical, etc.(public) Education, Medical, Sanitary, TV & Radio	Budget documents for salaries and wages	Income method (total earnings of staff + consumption of fixed capital)	Current price estimate deflated with CPI(IW)	
(2) Coaching centre	Employment and unemployment survey data from NSS 55 th round and population census, 2001 estimates of WF, Value added per worker from Enterprise Survey, 57 th round CPI(AL) and CPI(IW)	Base year estimates (WF*VAPW) WF is projected using the trend of consumer expenditure of education services in real terms and VAPW is projected with the index of CPI(AL) and CPI(IW) respectively.	By deflating the current price estimates with CPI(AL) and CPI(IW) respectively.	
(3) Education (-) Coaching centre Private - recognised	DGE&T work force Value added per worker from Enterprise Survey, 57 th round, CPI(AL) and CPI(IW)	Base year estimates =WF*VAPW For other years, WF is projected using the trend of consumer expenditure of education services in real terms and VAPW is projected with the index of CPI(AL) and CPI(UNME) for rural and urban areas respectively.	By deflating the current price estimates with CPI (AL) and CPI(IW) respectively.	
Private – unrecognised	Employment and unemployment survey data from NSS 55 th round and population census, 2001 estimates of WF, Value added per worker from	Base year estimates =WF*VAPW For other years, WF is projected using the trend of consumer expenditure of education services in real terms and VAPW is projected	By deflating the current price estimates with CPI (AL) and CPI(IW) respectively.	

Item	Source of data	Method of estimation		Remarks
		At current prices	At constant (1999-00) prices	
1	2	3	4	5
	Enterprise Survey, 57 th round CPI(AL) and CPI(IW)	with the index of CPI(AL) and CPI(UNME) for rural and urban areas respectively.		
(4) Medical and Health Private organised	DGE&T work force Value added per worker from Enterprise Survey, 57 th round, CPI(AL) and CPI(IW)	Base year estimates =WF*VAPW For other years, WF is projected using the trend of consumer expenditure of medical services in real terms and VAPW is projected with the index of CPI(AL) and CPI(UNME) for rural and urban areas, respectively.	By deflating the current price estimates with CPI (AL) and CPI(IW) respectively.	
Private unorganised	Employment and unemployment survey data from NSS 55 th round and population census, 2001 estimates of WF, Value added per worker from Enterprise Survey, 57 th round CPI(AL) and CPI(IW)	Base year estimates =WF*VAPW For other years, WF is projected using the trend of consumer expenditure of medical services in real terms and VAPW is projected with the index of CPI(AL) and CPI(UNME) for rural/urban areas..	By deflating the current price estimates with CPI(AL) and CPI(IW) respectively.	
(5) Sewage and refuse disposal Private sector	Employment and unemployment survey data from NSS 55 th round and population census, 2001 estimates of WF, Value added per worker from Enterprise Survey, 57 th round CPI(AL) and CPI(IW) Municipalities reports for VAPW	Base year estimates =WF*VAPW For other years, WF is projected using popn. Growth rate and VAPW is projected with the index of CPI(AL) and CPI(UNME) for rural/urban areas..	By deflating the current price estimates with CPI(AL) and CPI(IW) respectively, for rural and urban areas	

Item	Source of data	Method of estimation		Remarks
		At current prices	At constant (1999-00) prices	
1	2	3	4	5
(6) Activity of membership organisation	Employment and unemployment survey data from NSS 55 th round and population census, 2001 estimates of WF, Value added per worker from Enterprise Survey, 57 th round CPI(AL) and CPI(IW)	Base year estimates =WF*VAPW For other years, WF is projected using inter-survey average compound growth rate and VAPW is projected with the index of CPI(AL) and CPI(IW) respectively, for rural/urban areas..	By deflating the current price estimates with CPI(AL) and CPI(IW) respectively, for rural and urban areas.	
(7) Recreational activities Organised Un-organised	DGE&T publication for WF Annual reports/Accounts of research Institutes for VAPW	WF estimates for private segment has been obtained by subtracting public sector WF as obtained from DGE&T from the total EUS(55 th round) WF. Thus obtained private sector WF estimates have been divided into rural/urban X organized/unorganized. These WF estimates have been multiplied with the respective VAPW of 57 th round (adjusted for the base year 1999-00 with suitable indicators) of NSS to get the estimates of GVA in the base year For subsequent years the estimates of WF have been prepared using the inter survey average compound growth rate of quinquennial Employment & Unemployment surveys as observed between 1993-94 and 1999-00 of NSS and VAPW of rural and urban sector had been	By deflating the current price estimates with CPI(AL) and CPI(IW) respectively, for rural and urban areas.	

Item	Source of data	Method of estimation		Remarks
		At current prices	At constant (1999-00) prices	
1	2	3	4	5
		Projected to subsequent years with the index of CPI(AL) and CPI(IW) respectively.		
(8) following services: Private Hhs. With employed person Washing and cleaning Hair dressing Funeral related activities	Employment and unemployment survey data from NSS 55 th round and population census, 2001 estimates of WF, Value added per worker from Enterprise Survey, 57 th round CPI(AL) and CPI(IW)	Base year estimates =WF*VAPW For other years, WF is projected using inter-survey average compound growth rate and VAPW is projected with the index of CPI(AL) and CPI(IW) respectively, for rural/urban areas..	The constant price estimates for rural and urban have been obtained by deflating current price estimates with CPI(AL) and CPI(IW) respectively for rural and urban areas.	
(9)Tailoring services	NSSO 56 th round data on Value Added Per Worker (VAPW) and 56 th round NSSO estimates of work force separately for rural and urban areas in the base year	Base year estimate (WF*VAPW) For subsequent years the estimates of work force have been prepared using the inter survey average compound growth rate of quinquennial Emploment & Unemployment surveys as observed between 1993-94 and 1999-00 of NSS value added per worker of rural urban sectors have been projected to subsequent years with the index of CPI(AL) and CPI(IW) respectively.	By deflating the current price estimates with CPI(AL) and CPI(IW) respectively	
(10) international and other extra territorial bodies	Employment and unemployment survey data from NSS 55 th round and population census, 2001 estimates of WF,	WF* thrice the VAPW of public admn. & defence for the base year.	By deflating the current price estimates with CPI(IW)	

Item	Source of data	Method of estimation		Remarks
		At current prices	At constant (1999-00) prices	
1	2	3	4	5
17. Public Administration and Defence				
(1) Public Administration and Defence	Budget documents from state governments, central government and local authorities for details on salaries and wages Labour Bureau for the CPI	Income method (Total earnings of staff + consumption of fixed capital)	Current price estimates deflated by the CPI(IW)	
(2) Quasi Government Bodies	Annual Reports of research institutes for VAPW NSS/Population census for WF estimates DGE&T for organized sector's WF	Base year estimate (WF*VAPW) of WF is moved with the avg. compound growth rate observed between 1995/1990 in the WF of quasi-government bodies and value added per worker of rural and urban sectors have been projected to subsequent years with the index of CPI(IW).	Current price estimates deflated by the CPI(IW)	

